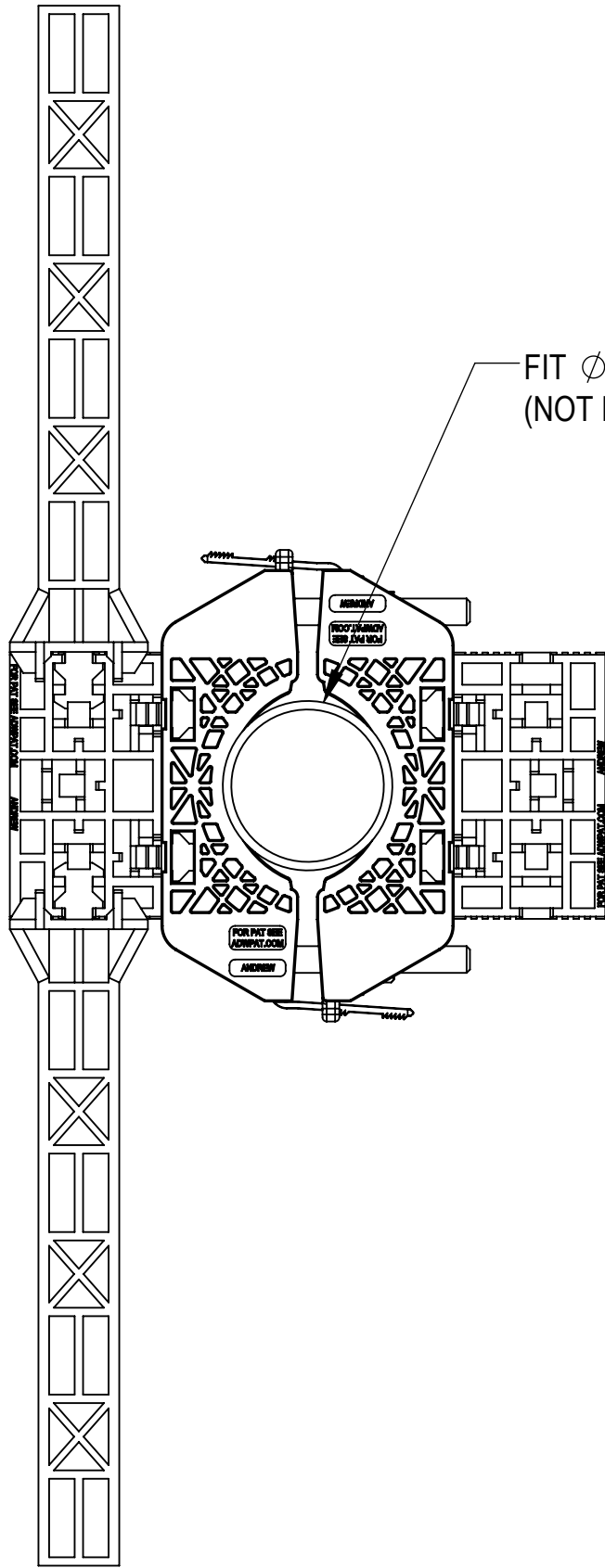


- 1.0 GENERAL NOTES
- 1.1 ALL METRIC DIMENSIONS ARE IN BRACKETS [X.X]
- 1.2 FEATURES CRITICAL TO QUALITY ARE INDICATED IN ROUNDED BOX (XX)
- 2.0 DESIGN NOTES
- 3.0 MANUFACTURING/SPECIAL REQUIREMENTS
- 3.1 TIGHTEN ALL BOLTS SECURING FLAT PLATES BY THE TURN-OF-NUT METHOD.
- 4.0 TEST
- 5.0 PACKAGING
- 5.1 PACKAGING MUST BE AGREED TO IN WRITING BY ANDREW PRIOR TO MASS-PRODUCTION APPROVAL.
- 5.2 PARTS ARE TO BE PACKAGING IN A MANNER TO PREVENT DAMAGE DURING SHIPMENT & STORAGE.
- 5.3 PACKAGING TO ADHERE TO ALL ANDREW, LOCAL & FOREIGN (WHERE APPLICABLE) SHIPPING REQUIREMENTS.
- 5.4 PACKAGING & PARTS TO BE FREE OF ALL CONTAMINANTS INCLUDING PAPER FROM BOX, DIRT, DUST, OILS, MOLD RELEASE, DETERGENT AND ALL OTHER FOREIGN MATERIALS.

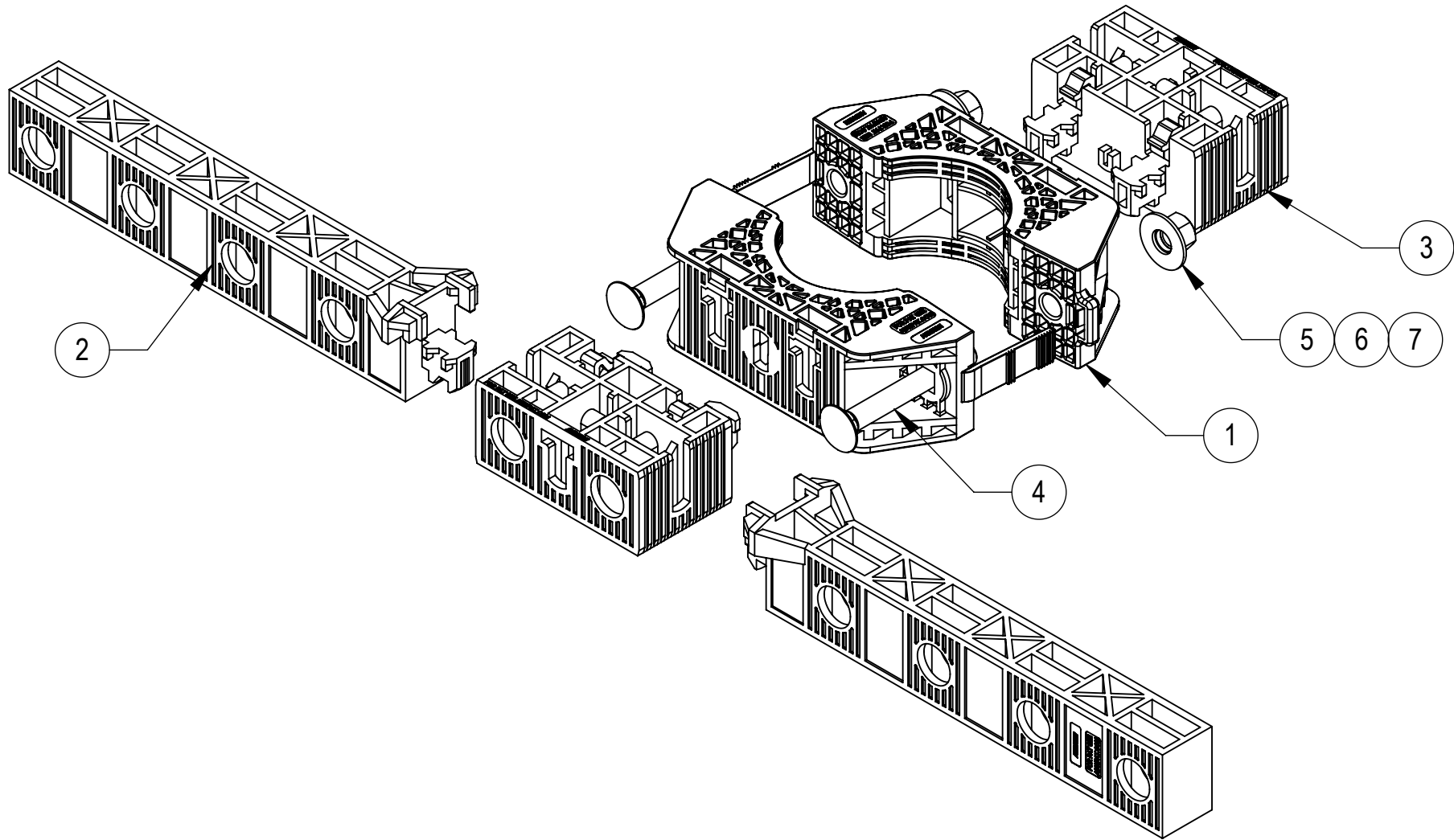


FIT Ø2.375" O.D. OR Ø2.875" O.D. PIPE  
(NOT INCLUDED IN THIS KIT)


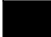



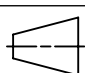
ASSEMBLY TOP VIEW

COMPONENT PART NUMBERS PROVIDED FOR ASSEMBLY PURPOSES;  
INDIVIDUAL COMPONENTS MAY BE SHIPPED AS PARTS WITHIN AN INCLUDED KIT.

ITEM NO.	PART NUMBER	DESCRIPTION	QTY.	WEIGHT
1	PGCS-1000	CLAMP,FRONT-REAR, POLYMER 4CP	2	0.33 LBS
2	PGCS-5000	PANEL, HALF, POLYMER, 8CP	2	0.30 LBS
3	PGCS-6000	ADAPTER, POLYMER, 2CP	2	0.21 LBS
4	9615-15	BOLT,CARRIAGE,3/8-16,3,STL GALV	2	0.12 LBS
5	GWf-03	3/8" GALV FLAT WASHER	2	0.01 LBS
6	GWL-03	3/8" GALV LOCK WASHER	2	0.01 LBS
7	GN-03	3/8" GALV HEX NUT	2	0.02 LBS



INSTALLATION ASSEMBLY

<div><b>ANDREW</b><sup>®</sup> an Amphenol company</div>											
TOLERANCES						SAP MATERIAL MASTER					
1 PLACE .X[X] ± 0.2[6.3]			3 PLACE .XXX[X] ± 0.060[1.5]			<b>PGP-CS18L</b>					
2 PLACE .XX[X] ± 0.12[3.0]			ANGLES ± 2°								
FINISH					MATERIAL						
UNLESS OTHERWISE SPECIFIED DIMENSIONS ARE IN INCHES INTERPRET PER ANSI Y 14.5M-1994		NAME	DATE	TITLE							
	CE	YX1027	24SEP24	<b>PG PREMIUM,CBL-SUPPORT,18-HOLE</b>							
	RW	JL1183	06/11/2025								
											
	AD	JX1030	06/11/2025	SCALE		<b>PGP-CS18L</b>					
	RE	JL1183	06/11/2025	<b>1:5</b>							
	ECN 50103287AMO										
SIZE		Auth Group	INSL	MODEL			DRAWING			SHEET	
<b>C</b>			VERSION	STATUS	REVISION	VERSION	STATUS	REVISION	1 OF 1		
			01	RE	<b>B</b>	01	RE	<b>B</b>			

Confidential