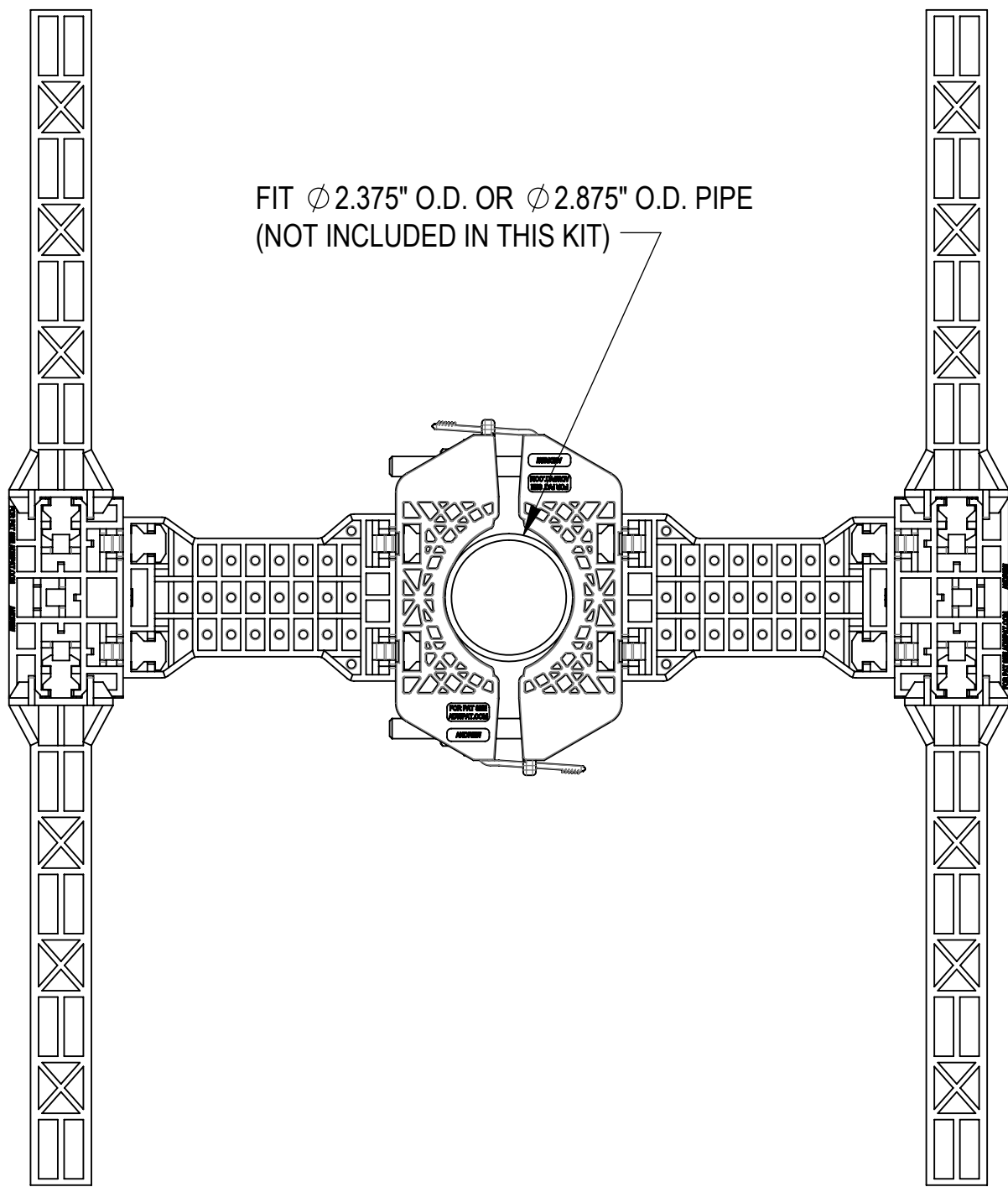


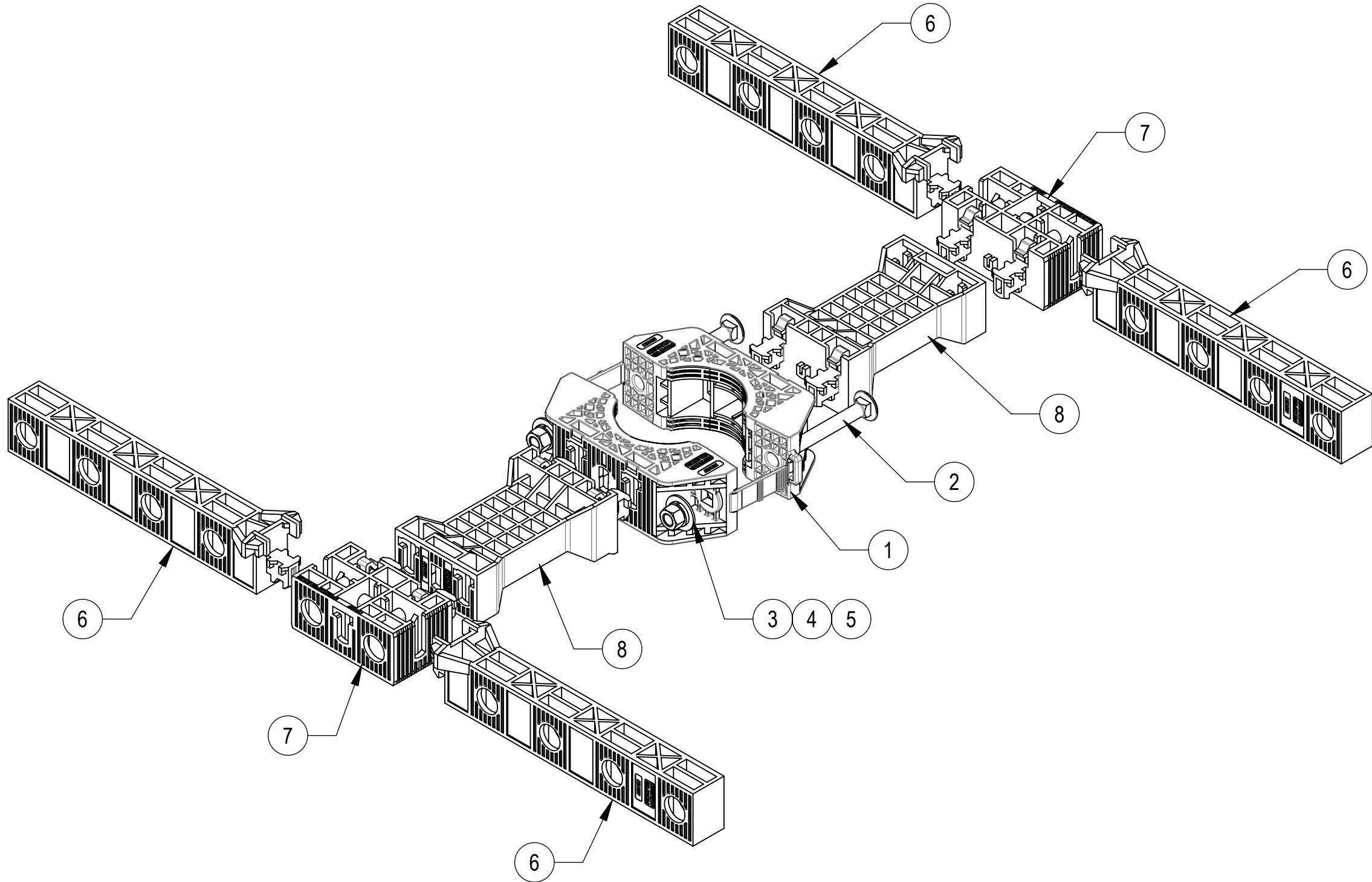
- 1.0 GENERAL NOTES
- 1.1 ALL METRIC DIMENSIONS ARE IN BRACKETS [X.X]
- 1.2 FEATURES CRITICAL TO QUALITY ARE INDICATED IN ROUNDED BOX (X.X)
- 2.0 DESIGN NOTES
- 3.0 MANUFACTURING/SPECIAL REQUIREMENTS
- 3.1 TIGHTEN ALL BOLTS SECURING FLAT PLATES BY THE TURN-OF-NUT METHOD.
- 4.0 TEST
- 5.0 PACKAGING
- 5.1 PACKAGING MUST BE AGREED TO IN WRITING BY ANDREW PRIOR TO MASS-PRODUCTION APPROVAL.
- 5.2 PARTS ARE TO BE PACKAGING IN A MANNER OT PREVENT DAMAGE DURING SHIPMENT & STORAGE.
- 5.3 PACKAGING TO ADHERE TO ALL ANDREW, LOCAL & FOREIGN (WHERE APPLICABLE) SHIPPING REQUIREMENTS.
- 5.4 PACKAGING & PARTS TO BE FREE OF ALL CONTAMINANTS INCLUDING PAPER FROM BOX, DIRT, DUST, OILS, MOLD RELEASE, DETERGENT AND ALL OTHER FOREIGN MATERIALS.



REVISIONS			
REV.	DESCRIPTION	DATE	APPROVED
A	INITIAL RELEASE	JL1183 12JUL24	JX1030 40200145CMO
B	UPDATED VIEWS FOR PGCS-1000(ITEM 1), PGCS-6000(ITEM 2), PGCS-7000(ITEM 3), PGCS-8000(ITEM 3) CHANGES; UPDATED TO ANDREW LOGE	JL1183 10JUN25	JX1030 50103287AMO




ASSEMBLY TOP VIEW



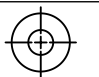
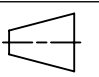
INSTALLATION ASSEMBLY

COMPONENT PART NUMBERS PROVIDED FOR ASSEMBLY PURPOSES;
INDIVIDUAL COMPONENTS MAY BE SHIPPED AS PARTS WITHIN AN INCLUDED KIT.

ITEM NO.	PART NUMBER	DESCRIPTION	QTY.	WEIGHT
1	PGCS-1000	CLAMP,FRONT-REAR, POLYMER 4CP	2	0.33 LBS
2	9615-15	BOLT,CARRIAGE,3/8-16,3,STL GALV	2	0.12 LBS
3	GWf-03	3/8" GALV FLAT WASHER	2	0.01 LBS
4	GWl-03	3/8" GALV LOCK WASHER	2	0.01 LBS
5	GN-03	3/8" GALV HEX NUT	2	0.02 LBS
6	PGCS-5000	PANEL, HALF, POLYMER, 8CP	4	0.30 LBS
7	PGCS-6000	ADAPTER, POLYMER, 2CP	2	0.21 LBS
8	PGCS-8000	ADAPTER, POLYMER, 4P	2	0.30 LBS



ANDREW® an Amphenol company

TOLERANCES		SAP MATERIAL MASTER						
1 PLACE .X[X] ± 0.2[6.3]	3 PLACE .XXX[X] ± 0.060[1.5]	PGP-CS36						
2 PLACE .XX[X] ± 0.12[3.0]	ANGLES ± 2°							
FINISH		MATERIAL ALUMINUM 5052-H32, 0.125" THICK						
UNLESS OTHERWISE SPECIFIED DIMENSIONS ARE IN INCHES INTERPRET PER ANSI Y 14.5M-1994	NAME	DATE	TITLE PG PREMIUM,CBL-SUPPORT,36-HOLE					
	CE JL1183	12JUL24						
	RW JL1183	06/11/2025	SCALE 1:3					
	AD JX1030	06/11/2025			DOCUMENT NO. PGP-CS36			
	RE JL1183	06/11/2025						
ECN 50103287AMO								
SIZE	Auth Group	INSL	MODEL		DRAWING			SHEET 1 OF 1
C			VERSION	STATUS	REVISION	VERSION	STATUS	
			01	RE	B	01	RE	B

DENSITY		lbs/in³
MASS	2.97	lbs
VOLUME	71.92	in³
SURFACE AREA	1254.72	in²
HEIGHT	18.6"	
LENGTH	21.9"	
WIDTH	2.1"	

Confidential