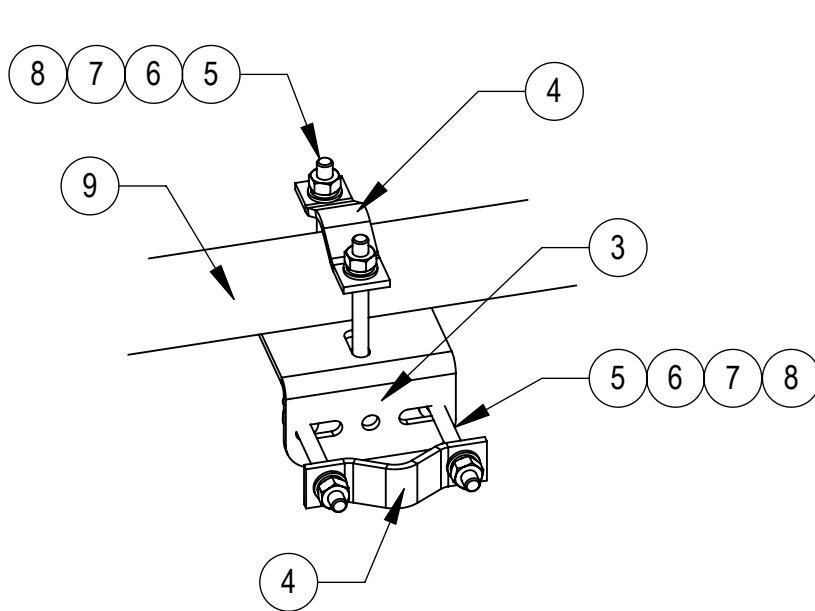
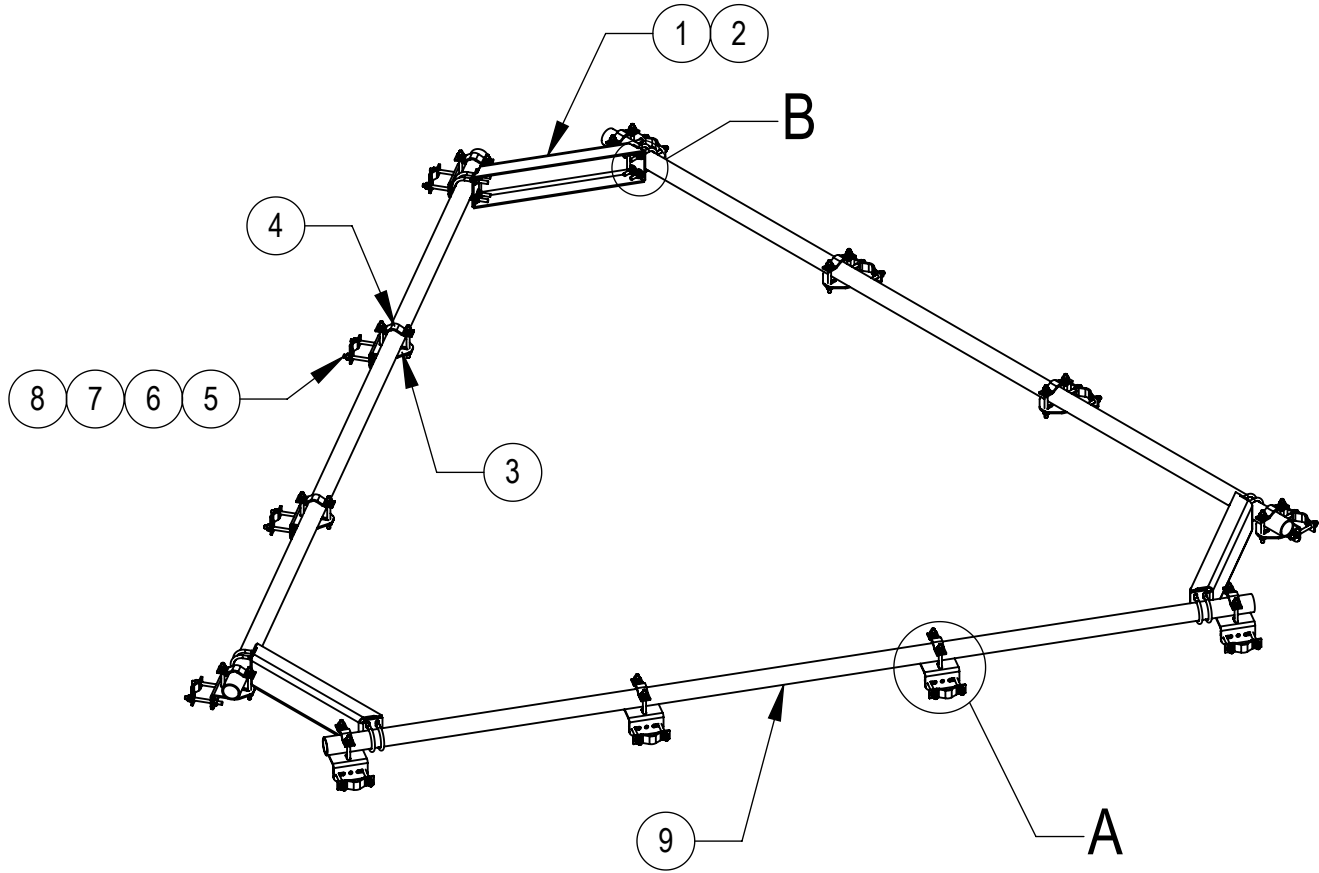
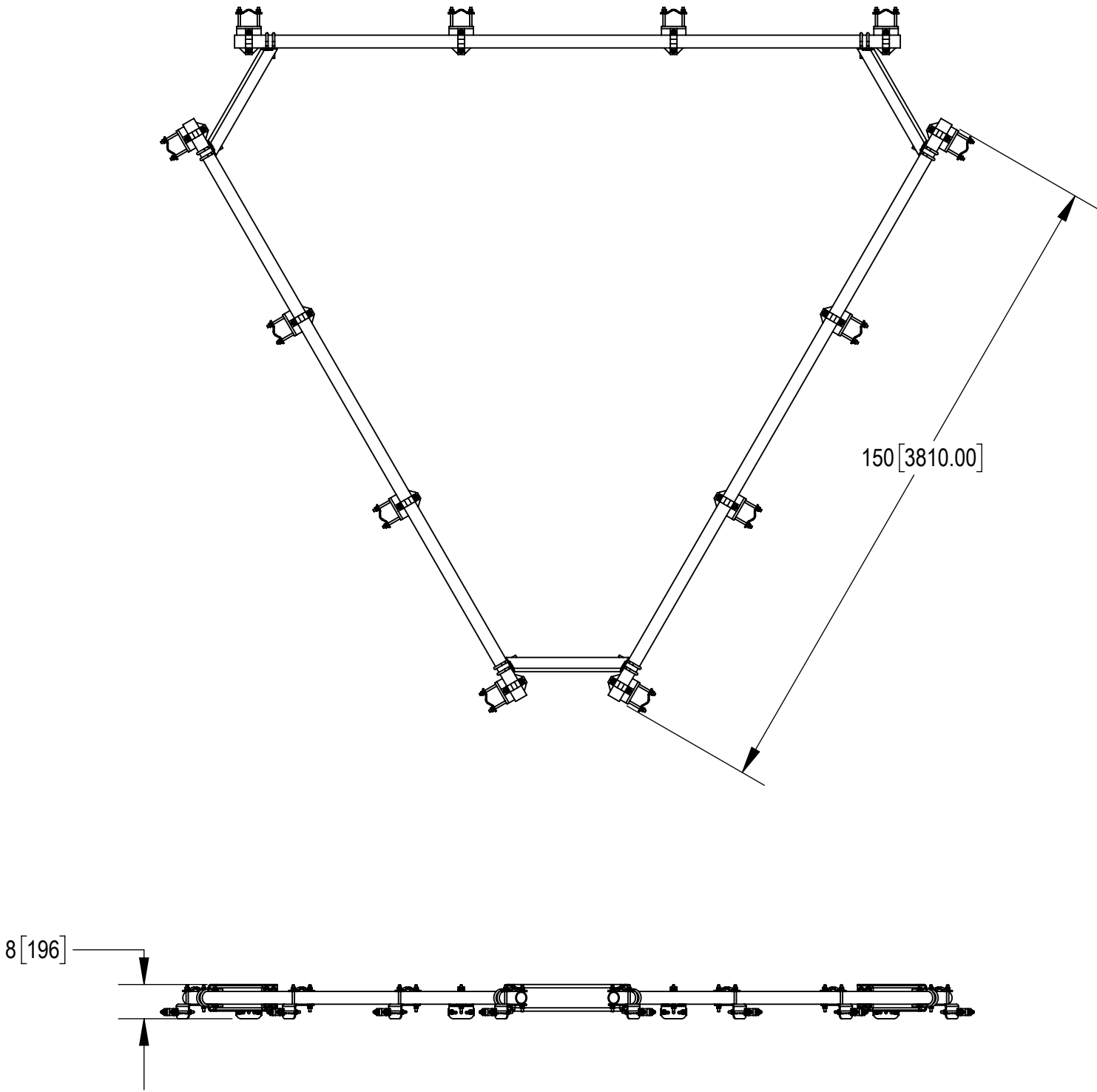
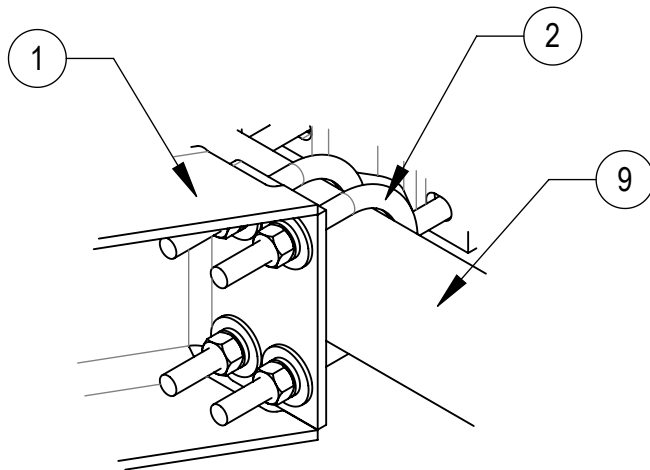


- 1.0 GENERAL NOTES
- 1.1 ALL METRIC DIMENSIONS ARE IN BRACKETS [X. X]
- 1.2 FOR PATENT INFO: <https://www.adwpat.com>
- 2.0 DESIGN NOTES
- 2.1 ANY HAZARDS OR OBSTRUCTIONS TO THE CLIMBING FACILITY AND SAFETY CLIMB MUST BE IDENTIFIED PRIOR TO INSTALLING THE APPURTENANCE. ADDITIONAL PRODUCTS MAY BE REQUIRED TO MAINTAIN THE INTEGRITY OF THE SAFETY CLIMB. DURING INSTALLATION, TEMPORARY AND/OR PERMANENT PRECAUTIONARY MEASURES SHOULD BE TAKEN TO PRESERVE THE CLIMBING FACILITY AND/OR SAFETY CLIMB.
- 3.0 MANUFACTURING/SPECIAL REQUIREMENTS
- 3.1 TIGHTEN ALL BOLTS SECURING FLAT PLATES BY THE TURN-OF-NUT METHOD. TIGHTEN ALL U-BOLTS USING TURN-OF-NUT METHOD WITH ATTENTION TO LEAVE EQUAL DISTANCE AND EQUAL FORCE ON EACH LEG OF THE U-BOLT.
- 4.0 TEST
- 5.0 PACKAGING
- 5.1 PACKAGING SHALL MEET ANDREW REQUIREMENTS PER DOCUMENT IS-PL-3005
- 5.2 PRINTED DOCUMENT TO BE PLACED INSIDE POLYBAG AND THEN IN SHIPPING CONTAINER
- 5.3 EXTRA HARDWARE MAY BE SUPPLIED, BAGGED AND SHIPPED

REVISIONS			
REV.	DESCRIPTION	DATE	APPROVED
A	INITIAL RELEASE	YX1027 12AUG25	BA1025 50104394AMO




DETAIL A
SCALE 1 : 6



DETAIL B
SCALE 1 : 4

COMPONENT PART NUMBERS PROVIDED FOR ASSEMBLY PURPOSES;
INDIVIDUAL COMPONENTS MAY BE SHIPPED AS PARTS WITHIN AN INCLUDED KIT.

ITEM	PART NO.	DESCRIPTION	QTY.	WEIGHT	NOTE NO.
1	MT19525	CORNER WELDMENT FOR MT-195	3	22.11 LBS	
2	GUB-4352	1/2" X 3" X 5-1/4" GALV U-BOLT	12	0.71 LBS	
3	XAU01	ANGLE, CROSSOVER, 1.9-3.5" X 1.9-3.5" OD	12	2.98 LBS	
4	ACP10	1.5" - 3.5" O.D. CLAMP HALF	24	0.61 LBS	
5	MT-379-6	1/2" X 6" GALV THREADED ROD	48	0.33 LBS	
6	GWFO4A	1/2" GALV FLAT WASHER (A325)	96	0.02 LBS	
7	GWL-04	1/2" GALV LOCK WASHER	96	0.01 LBS	
8	GN-04A	1/2" GALV HEX NUT (A194 2H)	96	0.07 LBS	
9	MT-546-150	PIPE, 2.875"OD X 150"	3	72.67 LBS	

**ANDREW**® an Amphenol company

TOLERANCES		SAP MATERIAL MASTER	
0 PLACE	X[X] ± 0.25[6.3]	2 PLACE	.XX[X] ± 0.06[1.5]
1 PLACE	.X[X] ± 0.12[3.0]	ANGLES	± 2°
FINISH		MATERIAL	
UNLESS OTHERWISE SPECIFIED DIMENSIONS ARE IN INCHES INTERPRET PER ANSI Y 14.5M-1994		TITLE	
CE	YX1027	DATE	12AUG25
RW	YX1027	DATE	08/13/2025
AD	YMENG	DATE	08/15/2025
RE	YMENG	DATE	08/15/2025
ECN 50104394AMO		SCALE	
		1:20	
		DOCUMENT NO.	
		MT-195-12UHD	
SIZE		Auth Group	
C		INSL	
MODEL		DRAWING	
VERSION		STATUS	
02		RE	
REVISION		VERSION	
C		00	
STATUS		RE	
A		A	
SHEET		1 OF 1	

DENSITY	446.68	lbs/in³
MASS	1575.33	lbs
VOLUME	15388.79	in³
SURFACE AREA		in²
HEIGHT	8"	
LENGTH	183"	
WIDTH	159"	

Confidential