

# RV-65A-R2



4-port sector antenna, 2x 694–960 and 2x 1695–2690 MHz, 65° HPBW, 2x RET

- All Internal RET actuators are connected in “Cascaded SRET” configuration
- Uses the 4.3-10 connector which is 40 percent smaller than the 7-16 DIN connector

**OBSOLETE**

This product was discontinued on: November 30, 2023

Replaced By:

RVV-65A-R3                      6-port sector antenna, 2x 694–960 and 4x 1695–2690 MHz, 65° HPBW, 3x RET

## General Specifications

Antenna Type	Sector
Band	Multiband
Grounding Type	RF connector inner conductor and body grounded to reflector and mounting bracket
Performance Note	Outdoor usage   Wind loading figures are validated by wind tunnel measurements described in white paper WP-112534-EN
Radome Material	Fiberglass, UV resistant
Reflector Material	Aluminum
RF Connector Interface	4.3-10 Female
RF Connector Location	Bottom
RF Connector Quantity, high band	2
RF Connector Quantity, mid band	0
RF Connector Quantity, low band	2
RF Connector Quantity, total	4

## Remote Electrical Tilt (RET) Information

RET Interface	8-pin DIN Female   8-pin DIN Male
RET Interface, quantity	1 female   1 male
Input Voltage	10–30 Vdc
Internal RET	High band (1)   Low band (1)
Power Consumption, idle state, maximum	1 W

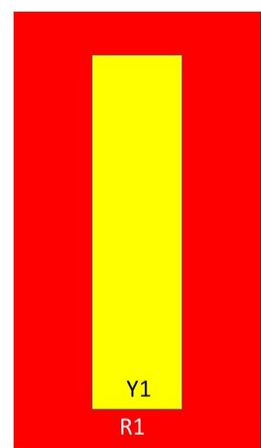
# RV-65A-R2

Power Consumption, normal conditions, maximum	10 W
Protocol	3GPP/AISG 2.0 (Single RET)

## Dimensions

Width	350 mm   13.78 in
Depth	208 mm   8.189 in
Length	1400 mm   55.118 in
Net Weight, without mounting kit	17.8 kg   39.242 lb

## Array Layout



Array	Freq (MHz)	Conns	RET (SRET)	AISG RET UID
R1	694-960	1-2	1	ANxxxxxxxxxxxxxxxx1
Y1	1695-2690	3-4	2	ANxxxxxxxxxxxxxxxx2

Left

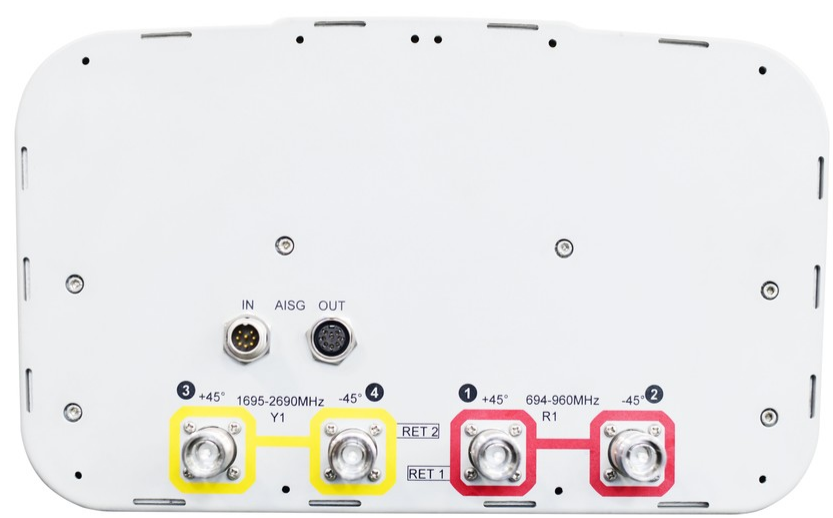
Right

Bottom

(Sizes of colored boxes are not true depictions of array sizes)

## Port Configuration

# RV-65A-R2



## Electrical Specifications

Impedance	50 ohm
Operating Frequency Band	1695 – 2690 MHz   694 – 960 MHz
Polarization	±45°
Total Input Power, maximum	800 W @ 50 °C

## Electrical Specifications

Frequency Band, MHz	694–790	790–890	890–960	1695–1920	1920–2180	2300–2690
Gain, dBi	14.1	14.2	14.6	16.9	17.2	18.2
Beamwidth, Horizontal, degrees	68	66	62	64	66	61
Beamwidth, Vertical, degrees	15	13.9	12.9	7.4	6.6	5.7
Beam Tilt, degrees	2–15	2–15	2–15	2–12	2–12	2–12
USLS (First Lobe), dB	13	14	15	22	20	21
Front-to-Back Ratio at 180°, dB	32	29	29	34	33	37
Isolation, Cross Polarization, dB	28	28	28	28	28	28
Isolation, Inter-band, dB	28	28	28	28	28	28
VSWR   Return loss, dB	1.5   14.0	1.5   14.0	1.5   14.0	1.5   14.0	1.5   14.0	1.5   14.0

# RV-65A-R2

<b>PIM, 3rd Order, 2 x 20 W, dBc</b>	-153	-153	-153	-153	-153	-153
<b>Input Power per Port at 50°C, maximum, watts</b>	300	300	300	250	250	200

## Mechanical Specifications

<b>Mechanical Tilt Range</b>	0°–20.5°
<b>Wind Loading @ Velocity, frontal</b>	221.0 N @ 150 km/h (49.7 lbf @ 150 km/h)
<b>Wind Loading @ Velocity, lateral</b>	185.0 N @ 150 km/h (41.6 lbf @ 150 km/h)
<b>Wind Loading @ Velocity, maximum</b>	469.0 N @ 150 km/h (105.4 lbf @ 150 km/h)
<b>Wind Loading @ Velocity, rear</b>	234.0 N @ 150 km/h (52.6 lbf @ 150 km/h)
<b>Wind Speed, maximum</b>	241 km/h (150 mph)

## Packaging and Weights

<b>Width, packed</b>	447 mm   17.598 in
<b>Depth, packed</b>	354 mm   13.937 in
<b>Length, packed</b>	1544 mm   60.787 in
<b>Weight, gross</b>	29 kg   63.934 lb

## Regulatory Compliance/Certifications

<b>Agency</b>	<b>Classification</b>
CHINA-ROHS	Above maximum concentration value
ISO 9001:2015	Designed, manufactured and/or distributed under this quality management system
ROHS	Compliant/Exempted
UK-ROHS	Compliant/Exempted



## Included Products

BSAMNT-3	–	Wide Profile Antenna Downtilt Mounting Kit for 2.4 - 4.5 in (60 - 115 mm) OD round members. Kit contains one scissor top bracket set and one bottom bracket set.
----------	---	--

## \* Footnotes

<b>Performance Note</b>	Severe environmental conditions may degrade optimum performance
-------------------------	---

# BSAMNT-3



Wide Profile Antenna Downtilt Mounting Kit for 2.4 - 4.5 in (60 - 115 mm) OD round members. Kit contains one scissor top bracket set and one bottom bracket set.

## Product Classification

**Product Type** Downtilt mounting kit

## General Specifications

**Application** Outdoor

**Color** Silver

## Dimensions

**Compatible Diameter, maximum** 115 mm | 4.528 in

**Compatible Diameter, minimum** 60 mm | 2.362 in

**Weight, net** 6.2 kg | 13.669 lb

## Material Specifications

**Material Type** Galvanized steel

## Packaging and Weights

**Included** Brackets | Hardware

**Packaging quantity** 1

**Weight, gross** 6.4 kg | 14.11 lb

## Regulatory Compliance/Certifications

Agency	Classification
CE	Compliant with the relevant CE product directives
CHINA-ROHS	Below maximum concentration value
ISO 9001:2015	Designed, manufactured and/or distributed under this quality management system
REACH-SVHC	Compliant as per SVHC revision on <a href="http://www.andrew.com/ProductCompliance">www.andrew.com/ProductCompliance</a>
ROHS	Compliant
UK-ROHS	Compliant

