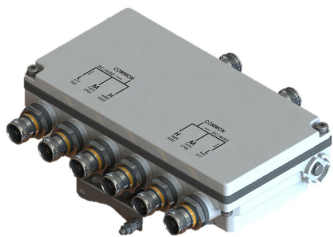


# STX61742T-43 | E14F10P63



Compact Twin Triplexer 617-960/1695-2700/3400- 4200 MHz, 4.3-10 connectors

- New Combining Solution to introduce 5G, 3.5GHz band
- BTS-to-feeder and feeder-to-antenna application
- New 4.3-10 connectors for improved PIM performance and size reduction
- dc/AISG pass-through on low frequency ports
- Suitable for space limited applications like Metro Cell, Lamp Pole, Concealment Solution and Macro Site
- Ideal for small cell applications

## Product Classification

**Product Type** Triplexer

## General Specifications

**Color** Gray

**Common Port Label** COMM

**Modularity** 2-Twin

**Mounting** Pole | Wall

**Mounting Pipe Hardware** Band clamps (2)

**RF Connector Interface** 4.3-10 Female

**RF Connector Interface Body Style** Long neck

## Dimensions

**Height** 118 mm | 4.646 in

**Width** 228 mm | 8.976 in

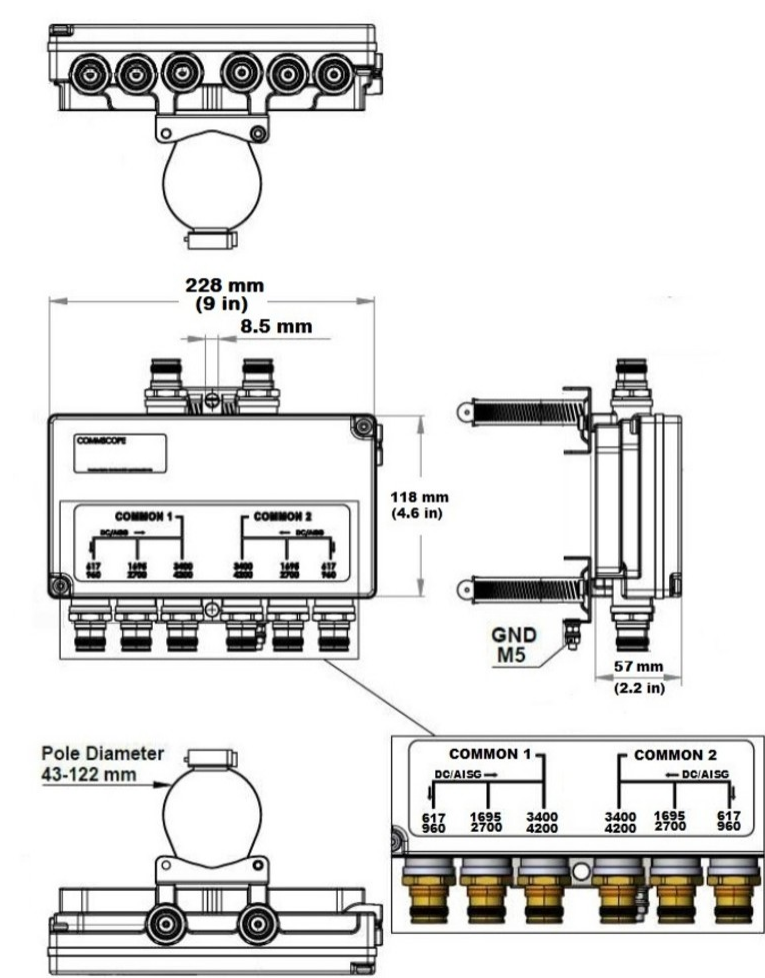
**Depth** 57 mm | 2.244 in

**Ground Screw Diameter** 5 mm | 0.197 in

**Mounting Pipe Diameter Range** 42.6–122 mm

## Outline Drawing

# STX61742T-43 | E14F10P63



## Electrical Specifications

Impedance	50 ohm
License Band, Band Pass	APT 700   AWS 1700   CEL 850   CEL 900   DCS 1800   EDD 800   IMT 2100   IMT 2600   LMR 750   LMR 800   LMR 900   PCS 1900   TDD 2000   TDD 2300   TDD 2600   TDD 3500   USA 600   USA 700   USA 750   WCS 2300

## Electrical Specifications, dc Power/Alarm

dc/AISG Pass-through Method	Factory set
dc/AISG Pass-through Path	Branch 1
dc/AISG Pass-through, combiner	Branch 1
Lightning Surge Current	5 kA
Lightning Surge Current Waveform	8/20 waveform

# STX61742T-43 | E14F10P63

Voltage7–32 Vdc

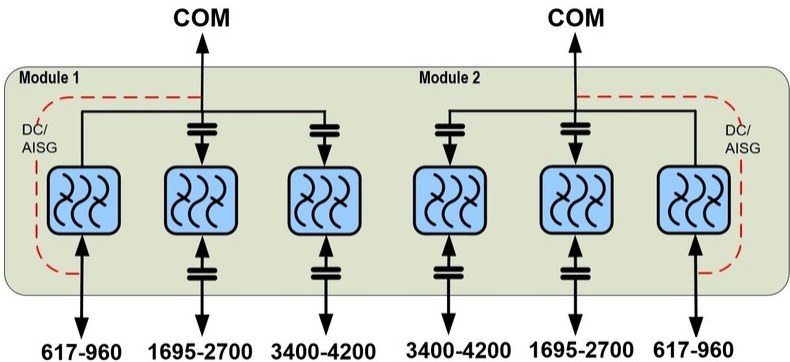
## Electrical Specifications

Sub-module	1   2	1   2	1   2
Branch	1	2	3
Port Designation	617-960	1695-2700	3400-4200
License Band	APT 700, Band Pass USA 700, Band Pass USA 750, Band Pass USA 600, Band Pass CEL 850, Band Pass CEL 900, Band Pass EDD 800, Band Pass	PCS 1900, Band Pass WCS 2300, Band Pass TDD 2000, Band Pass AWS 1700, Band Pass TDD 2300, Band Pass TDD 2600, Band Pass DCS 1800, Band Pass IMT 2100, Band Pass IMT 2600, Band Pass	TDD 3500, Band Pass

## Electrical Specifications, Band Pass

Frequency Range, MHz	617–960	1695–2700	3400–4200
Insertion Loss, typical, dB	0.15	0.15	0.15
Total Group Delay, maximum, ns	8	8	8
Return Loss, typical, dB	20	20	20
Isolation, minimum, dB	35	35	35
Input Power, RMS, maximum, W	160	160	160
Input Power, PEP, maximum, W	1600	1600	1600
3rd Order PIM, maximum, dBc	-161	-161	-145
3rd Order PIM Test Method	Two +43 dBm carriers	Two +43 dBm carriers	Two +43 dBm carriers

## Block Diagram



## Mechanical Specifications

# STX61742T-43 | E14F10P63

---

Wind Loading @ Velocity, frontal	32.0 N @ 150 km/h (7.2 lbf @ 150 km/h)
Wind Loading @ Velocity, lateral	4.0 N @ 150 km/h (0.9 lbf @ 150 km/h)

## Environmental Specifications

Operating Temperature	-40 °C to +65 °C (-40 °F to +149 °F)
Relative Humidity	Up to 100%
Corrosion Test Method	IEC 60068-2-11, 30 days
Ingress Protection Test Method	IEC 60529:2001, IP67

## Packaging and Weights

Included	Mounting hardware
Mounting Hardware Weight	0.2 kg   0.441 lb
Volume	1.53 L
Weight, net	2.9 kg   6.393 lb
Weight, without mounting hardware	2.7 kg   5.952 lb