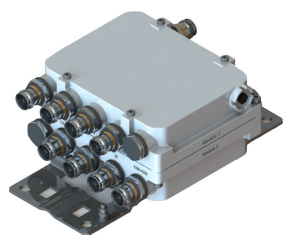


# E14F15P33



Twin Quadplexer 1350-2200/2300-2400/2496-2700/3300-4200, No dc bypass, with 4.3-10 connectors

- New Combining Solution to introduce 5G, 3.5GHz band
- Industry leading PIM performance
- New 4.3-10 connectors for improved PIM performance and size reduction
- Suitable for feeders cables reduction
- dc/AISG blocking on all ports
- Clam shell configuration

## Product Classification

**Product Type** Quadplexer

## General Specifications

**Color** Gray

**Modularity** 2-Twin

**Mounting** Pole | Wall

**Mounting Pipe Hardware** Band clamps (2)

**RF Connector Interface** 4.3-10 Female

## Dimensions

**Height** 87 mm | 3.425 in

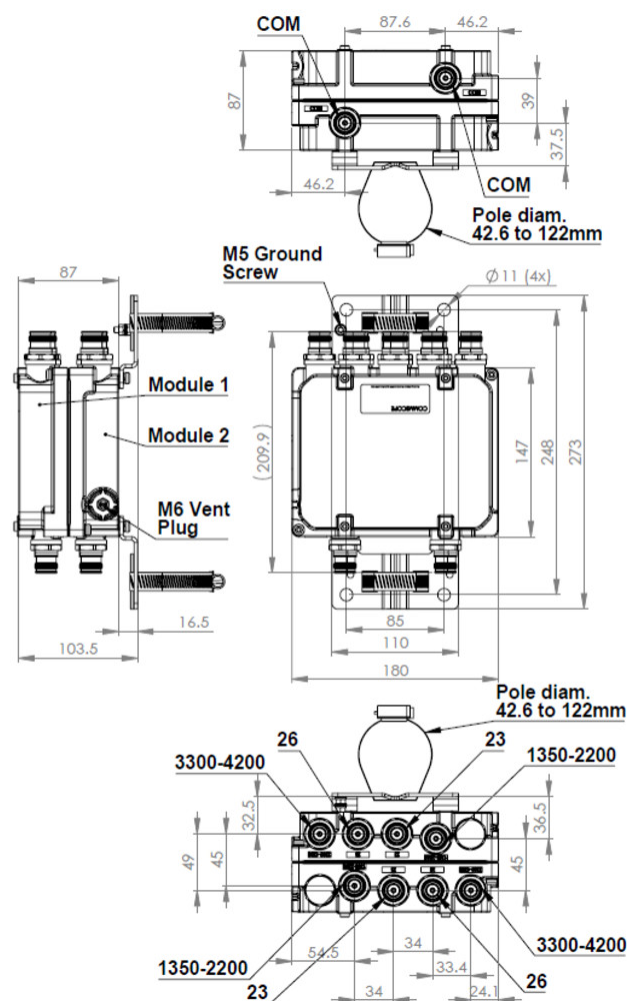
**Width** 180 mm | 7.087 in

**Depth** 157 mm | 6.181 in

**Mounting Pipe Diameter Range** 42.6–122 mm

## Outline Drawing

# E14F15P33



## Electrical Specifications

**Impedance** 50 ohm

## Electrical Specifications, dc Power/Alarm

**Lightning Surge Current** 5 kA

**Lightning Surge Current Waveform** 8/20 waveform

## Electrical Specifications

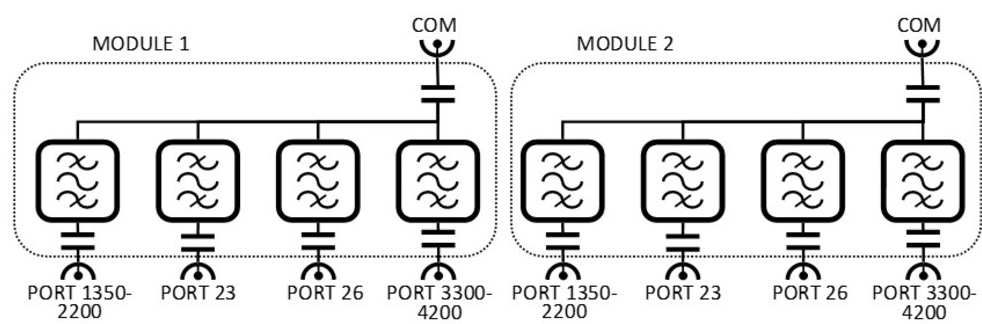
Sub-module	1   2	1   2	1   2	1   2
Branch	1	2	3	4
Port Designation	PORT 2 1350-2200	PORT 3 2300-2400	PORT 4 2496-2700	PORT 5 3300-4200

## Electrical Specifications, Band Pass

# E14F15P33

Frequency Range, MHz	1350–2200	2300–2400	2496–2700	3300–4200
Insertion Loss, typical, dB	0.2	0.3	0.3	0.2
Return Loss, typical, dB	20	20	20	20
Isolation, typical, dB	35	35	45	55
Input Power, RMS, maximum, W	125	125	125	125
Input Power, PEP, maximum, W	1250	1250	1250	1250
3rd Order PIM, typical, dBc	-163	-163	-163	-163
3rd Order PIM Test Method	Two +43 dBm carriers   Two +43 dBm carriers   Two +43 dBm carriers   Two +43 dBm carriers			

## Block Diagram



## Mechanical Specifications

Wind Speed, maximum	240 km/h (149 mph)
---------------------	--------------------

## Environmental Specifications

Operating Temperature	-40 °C to +65 °C (-40 °F to +149 °F)
Corrosion Test Method	IEC 60068-2-11, 30 days
Environmental Test Method	ETSI EN 300 019-1-4
Ingress Protection Test Method	IEC 60529:2001, IP67

## Packaging and Weights

Included	Mounting hardware
Volume	2.5 L
Weight, net	4.6 kg   10.141 lb
Weight, without mounting hardware	4.2 kg   9.259 lb