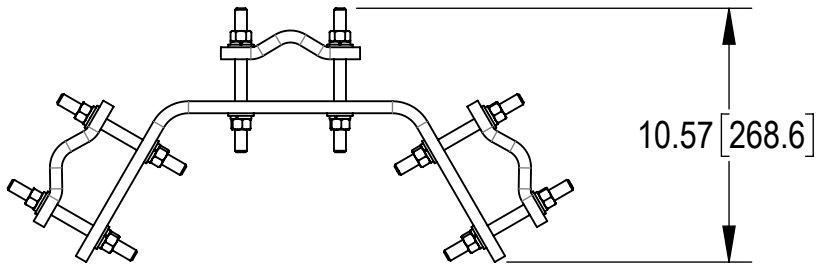
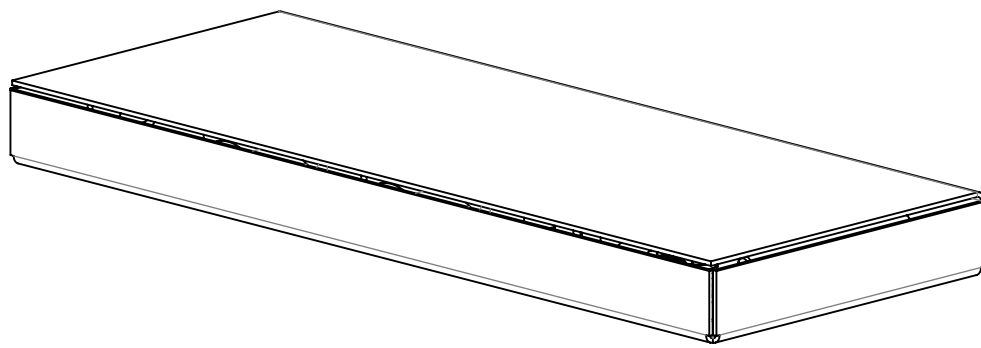
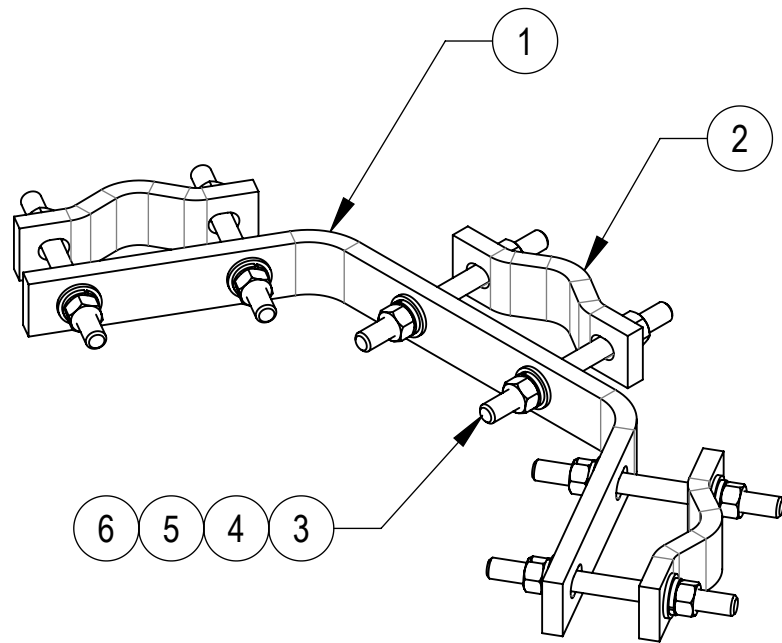
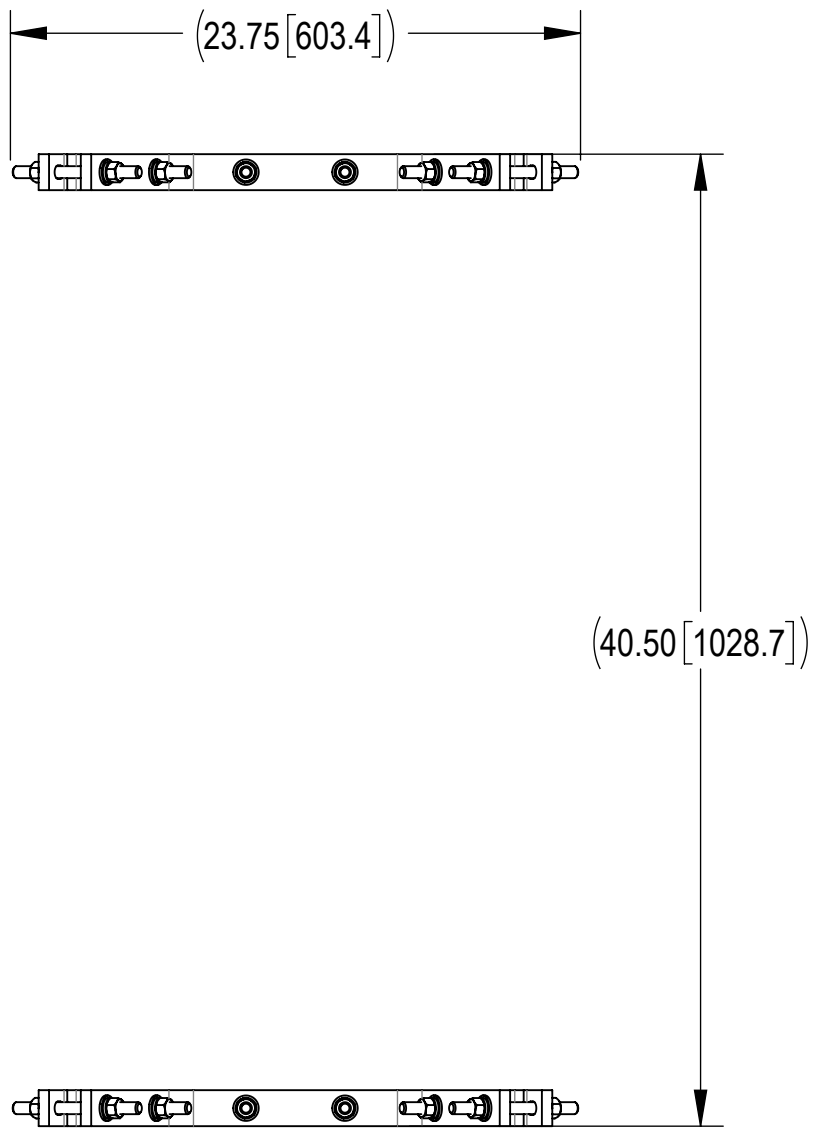
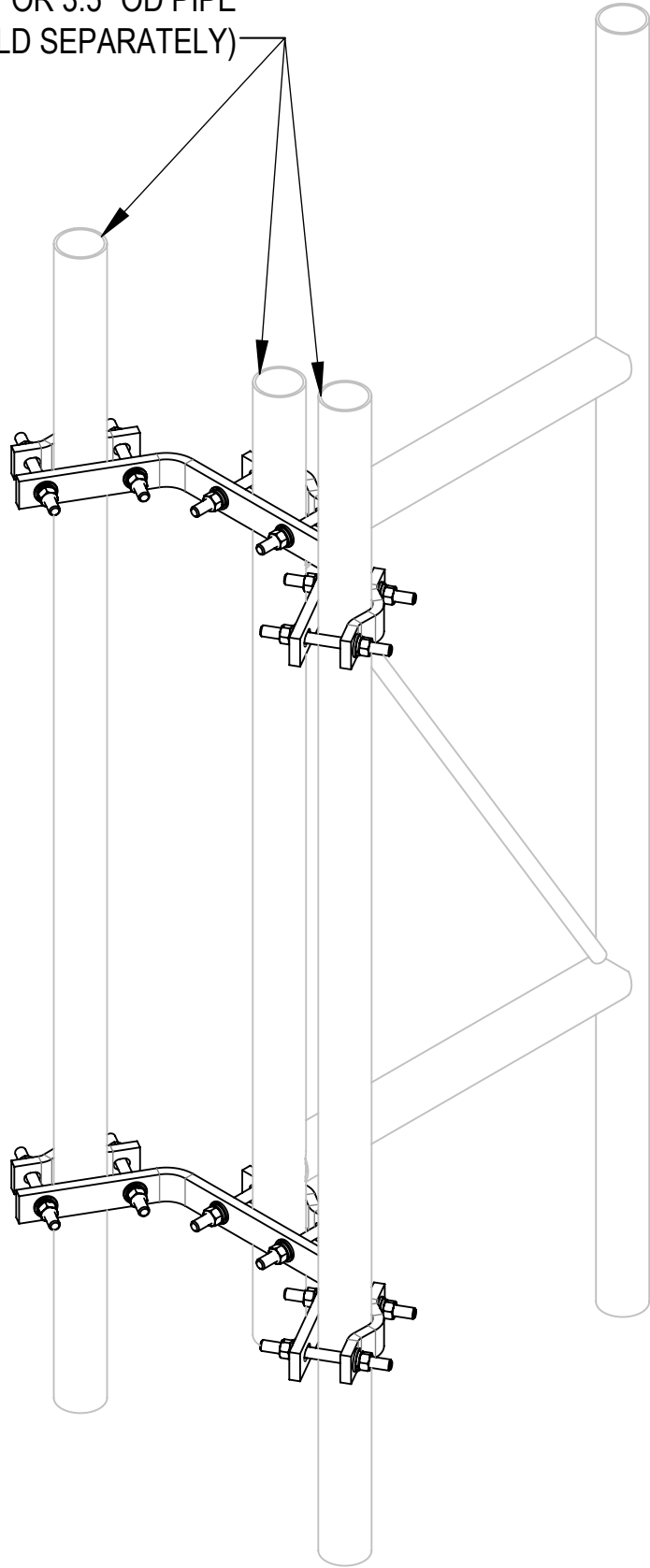


- 1.0 GENERAL NOTES
- 1.1 ALL METRIC DIMENSIONS ARE IN BRACKETS [X. X]
- 1.2 FOR PATENT INFO: <https://www.adwpat.com>
- 2.0 DESIGN NOTES
- 2.1 ANY HAZARDS OR OBSTRUCTIONS TO THE CLIMBING FACILITY AND SAFETY CLIMB MUST BE IDENTIFIED PRIOR TO INSTALLING THE APPURTENANCE. ADDITIONAL PRODUCTS MAY BE REQUIRED TO MAINTAIN THE INTEGRITY OF THE SAFETY CLIMB. DURING INSTALLATION, TEMPORARY AND/OR PERMANENT PRECAUTIONARY MEASURES SHOULD BE TAKEN TO PRESERVE THE CLIMBING FACILITY AND/OR SAFETY CLIMB.
- 3.0 MANUFACTURING/SPECIAL REQUIREMENTS
- 3.1 TIGHTEN ALL BOLTS SECURING FLAT PLATES BY THE TURN-OF-NUT METHOD. TIGHTEN ALL U-BOLTS USING TURN-OF-NUT METHOD WITH ATTENTION TO LEAVE EQUAL DISTANCE AND EQUAL FORCE ON EACH LEG OF THE U-BOLT.
- 4.0 TEST
- 5.0 PACKAGING
- 5.1 PACKAGING SHALL MEET ANDREW REQUIREMENTS PER DOCUMENT IS-PL-3005
- 5.2 PRINTED DOCUMENT TO BE PLACED INSIDE POLYBAG AND THEN IN SHIPPING CONTAINER
- 5.3 EXTRA HARDWARE MAY BE SUPPLIED, BAGGED AND SHIPPED



FIT 2.375" OR 3.5" OD PIPE
(SOLD SEPARATELY)




PACKAGE

COMPONENT PART NUMBERS PROVIDED FOR ASSEMBLY PURPOSES;
INDIVIDUAL COMPONENTS MAY BE SHIPPED AS PARTS WITHIN AN INCLUDED KIT.

ITEM	PART NO.	DESCRIPTION	QTY.	WEIGHT	NOTE NO.
1	DAC2	DOUBLE ANTENNA CLAMP	2	4.75 LBS	
2	SCP10	CLAMP HALF: 1/2", 9/16" HOLE,4-1/8" (EA)	6	1.20 LBS	
3	MT-379-6	1/2" X 6" GALV THREADED ROD	12	0.33 LBS	
4	GWFO4A	1/2" GALV FLAT WASHER (A325)	24	0.02 LBS	
5	GWL-04	1/2" GALV LOCK WASHER	24	0.01 LBS	
6	GN-04	1/2" GALV HEX NUT	24	0.04 LBS	

DENSITY		lbs/in³
MASS	22.48	lbs
VOLUME	79.79	in³
SURFACE AREA	612.20	in²
HEIGHT	3.0"	
LENGTH	23.8"	
WIDTH	10.6"	

Confidential

**ANDREW**[®] an Amphenol company

TOLERANCES

1 PLACE .X[X] ± 0.12[3.0] 3 PLACE .XXX[X] ± 0.03[0.8]
2 PLACE .XX[X] ± 0.06[1.5] ANGLES ± 2°

SAP MATERIAL MASTER
DA-C200

FINISH

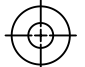
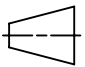
MATERIAL

UNLESS OTHERWISE SPECIFIED
DIMENSIONS ARE IN INCHES
INTERPRET PER ANSI Y 14.5M-1994

	NAME	DATE	TITLE
CE	AW	12/05/06	DOUBLE ANTENNA MOUNT (KIT/2)
RW	YC1059	05/26/2025	
AD	YW1047	05/27/2025	
RE	YMENG	05/27/2025	
ECN 50102992AMO			

SCALE
1:8

DOCUMENT NO.
DA-C200

SIZE	Auth Group	INSL	MODEL			DRAWING			SHEET 1 OF 1
C			VERSION	STATUS	REVISION	VERSION	STATUS	REVISION	
			00	RE	A	01	RE	G	