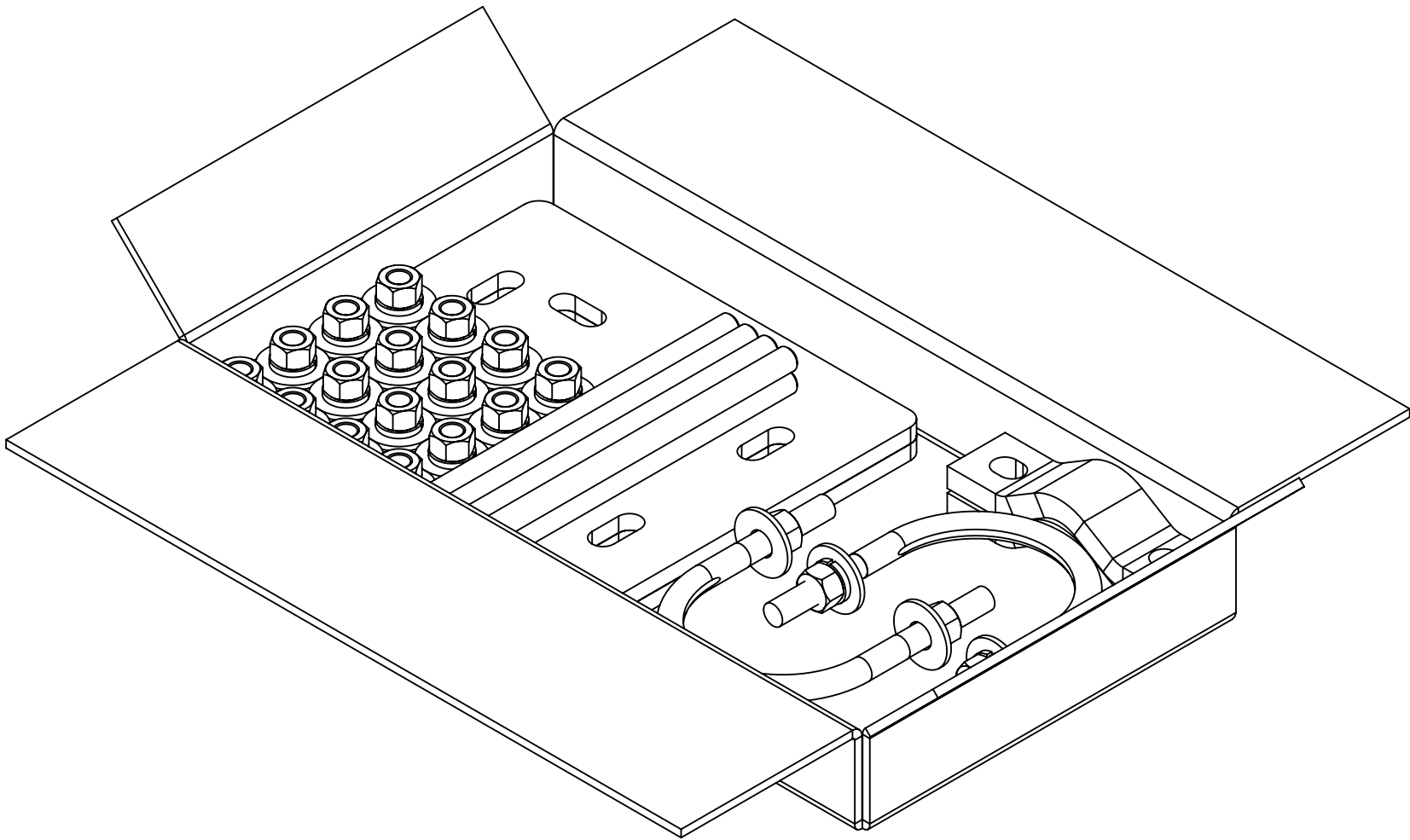

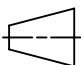


1.0 GENERAL NOTES
1.1 ALL METRIC DIMENSIONS ARE IN BRACKETS [X. X]
1.2 FOR PATENT INFO: <https://www.cs-pat.com>
2.0 DESIGN NOTES
2.1 WILL FIT 3-1/2" ROUND OR UP TO 3.5" SQUARE TUBE.
3.0 MANUFACTURING/SPECIAL REQUIREMENTS
3.1 TIGHTEN ALL BOLTS SECURING FLAT PLATES BY THE TURN-OF-NUT METHOD. TIGHTEN ALL U-BOLTS USING TURN-OF-NUT METHOD WITH ATTENTION TO LEAVE EQUAL DISTANCE AND EQUAL FORCE ON EACH LEG OF THE U-BOLT.
4.0 TEST
5.0 PACKAGING
5.1 PACKAGING SHALL MEET COMMScope REQUIREMENTS PER DOCUMENT IS-PL-3005
5.2 PRINTED DOCUMENT TO BE PLACED INSIDE POLYBAG AND THEN IN SHIPPING CONTAINER
5.3 EXTRA HARDWARE MAY BE SUPPLIED, BAGGED AND SHIPPED
5.4 INSERT LOOSE HARDWARE INTO POLYBAGS AS REQUIRED

REVISIONS			
REV.	DESCRIPTION	DATE	APPROVED
A	INITIAL RELEASE	ADW 26MAR15	TP 8000008669
B	UPDATED DRAWING TEMPLATE	LS1146 08AUG24	YC1015 40201892CMO



COMMSCOPE, INC. OF NORTH CAROLINA													
TOLERANCES							SAP MATERIAL MASTER						
1 PLACE .X[X] ± 0.06[1.5]							3 PLACE .XXX[X] ± 0.010[0.3]						
2 PLACE .XX[X] ± 0.03[0.8]							ANGLES ± 2°						
FINISH							MATERIAL						
UNLESS OTHERWISE SPECIFIED DIMENSIONS ARE IN INCHES INTERPRET PER ANSI Y 14.5M-1994		NAME		DATE		TITLE CO TUBE-TO-SQ-RND CLAMPS SINGLE-LARGE							
	CE	ADW		26MAR15									
	RW	YMENG		08/12/2024									
	AD	JL1183		08/13/2024		SCALE 1:8		DOCUMENT NO. XP-197-35US					
	RE	YMENG		08/13/2024									
	ECN 40201892CMO												
SIZE		Auth Group		INSL		MODEL			DRAWING			SHEET 1 OF 2	
C						VERSION		STATUS	REVISION	VERSION	STATUS		REVISION
						00		RE	B	00	RE	B	

D

D

C

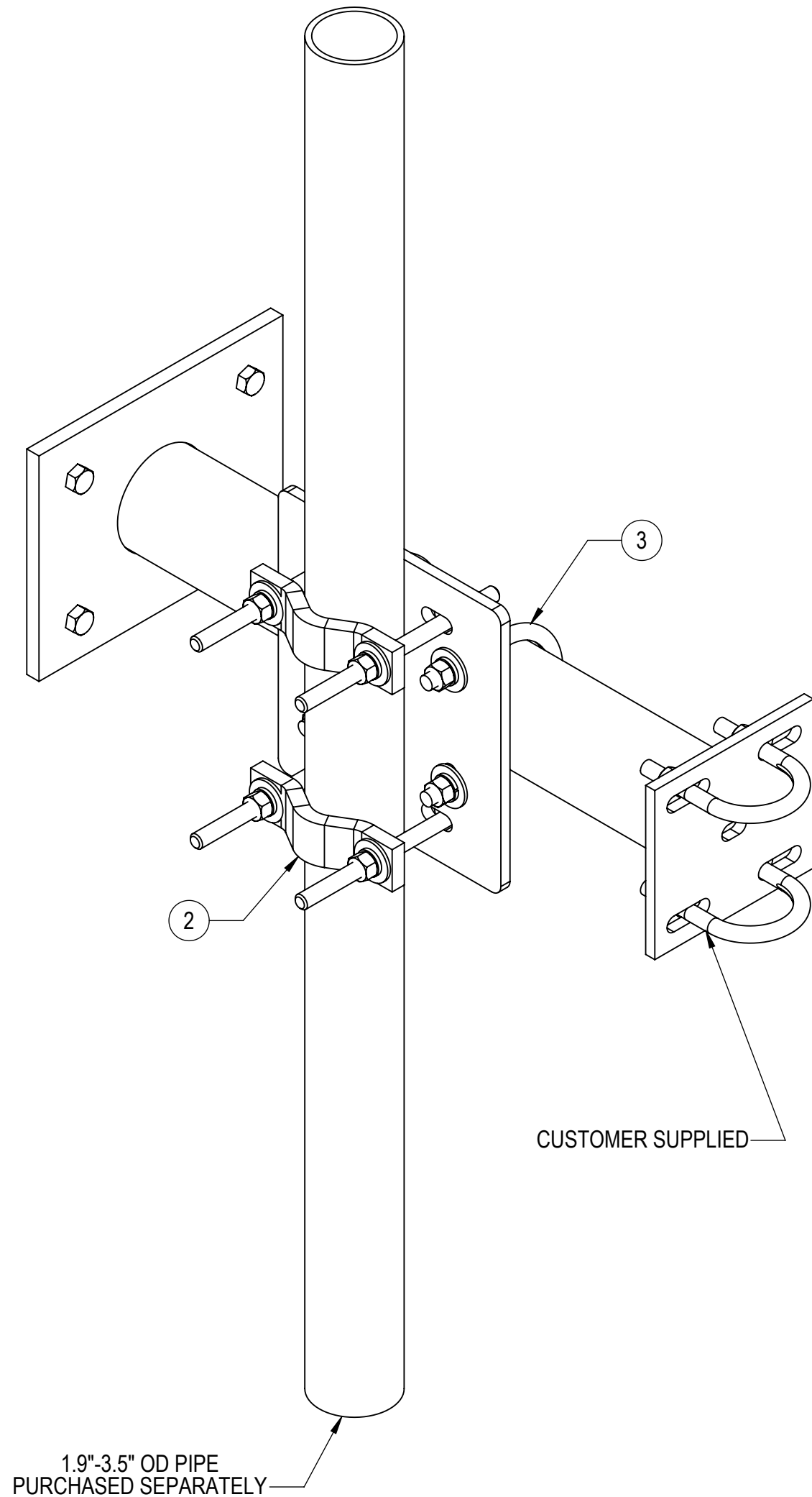
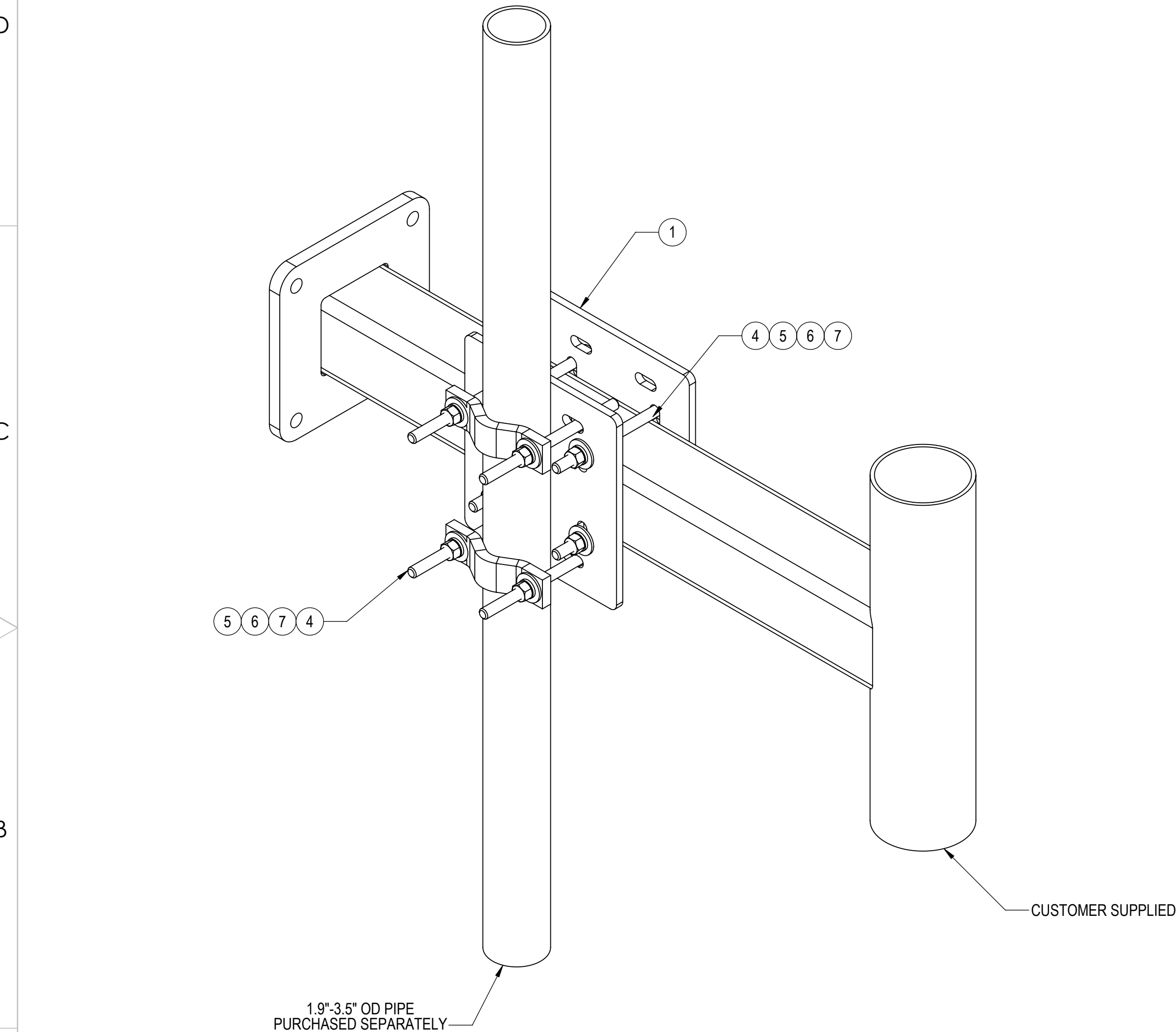
C

B

B

A

A



COMPONENT PART NUMBERS PROVIDED FOR ASSEMBLY PURPOSES;
INDIVIDUAL COMPONENTS MAY BE SHIPPED AS PARTS WITHIN AN INCLUDED KIT.

ITEM	PART NO.	DESCRIPTION	QTY.	WEIGHT	NOTE NO.
1	XP3030.01	CROSSOVER PLATE ϕ 3-1/2" O.D. TO ϕ 3-1/2" O.D.	2	9.09 LBS	
2	SCP10	CLAMP HALF: 1/2", 9/16" HOLE, 4-1/8" (EA)	2	1.20 LBS	
3	GUB-4355	1/2" X 3-5/8" X 5" GALV U-BOLT	2	0.71 LBS	5.4
4	MT-379-8	1/2" X 8" GALV THREADED ROD	8	0.44 LBS	5.4
5	GN-04	1/2" GALV HEX NUT	16	0.04 LBS	5.4
6	GWL-04	1/2" GALV LOCK WASHER	16	0.01 LBS	5.4
7	GWF-04	1/2" GALV FLAT WASHER	16	0.04 LBS	5.4

COMMScope, INC. OF NORTH CAROLINA					
TITLE					
CO TUBE-TO-SQ-RND CLAMPS SINGLE-LARGE					
SIZE	SCALE	DOCUMENT NO.			
C	1:8	XP-197-35US			
		DRAWING			SHEET
		VERSION	STATUS	REVISION	
		00	RE	B	2 OF 2