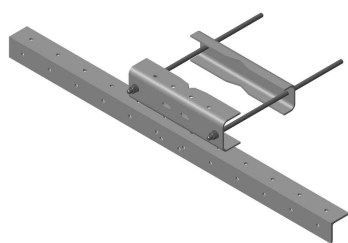


# MDL-SSA6



Tower Leg Mounted Microwave Antenna Channel Support Kit, 72 in

## Product Classification

**Product Type** Microwave strut support

## General Specifications

**Mounting** Straight or tapered legs up to 406.4 mm (16 in) OD

**Pipe, quantity** 0

**Tower Taper** Non-tapered | Tapered

## Dimensions

**Height** 152.4 mm | 6 in

**Width** 1,828.8 mm | 72 in

**Length** 203.2 mm | 8 in

**Mounting Diameter, maximum** 406.4 mm | 16 in

**Mounting Diameter, minimum** 50.8 mm | 2 in

## Material Specifications

**Material Type** Hot dip galvanized steel

## Mechanical Specifications

**Wind Rating** For Specifications, please contact your local ANDREW representative

## Packaging and Weights

**Included** Angle | Attachment hardware | Clamps

**Packaging quantity** 1

**Weight, net** 47.6 kg | 104.94 lb

## Regulatory Compliance/Certifications

Agency	Classification
--------	----------------

# MDL-SSA6

---

ISO 9001:2015                      Designed, manufactured and/or distributed under this quality management system

\* Footnotes

**Wind Rating**                      BWS—Base Wind Speed; FBC—Florida Building Code