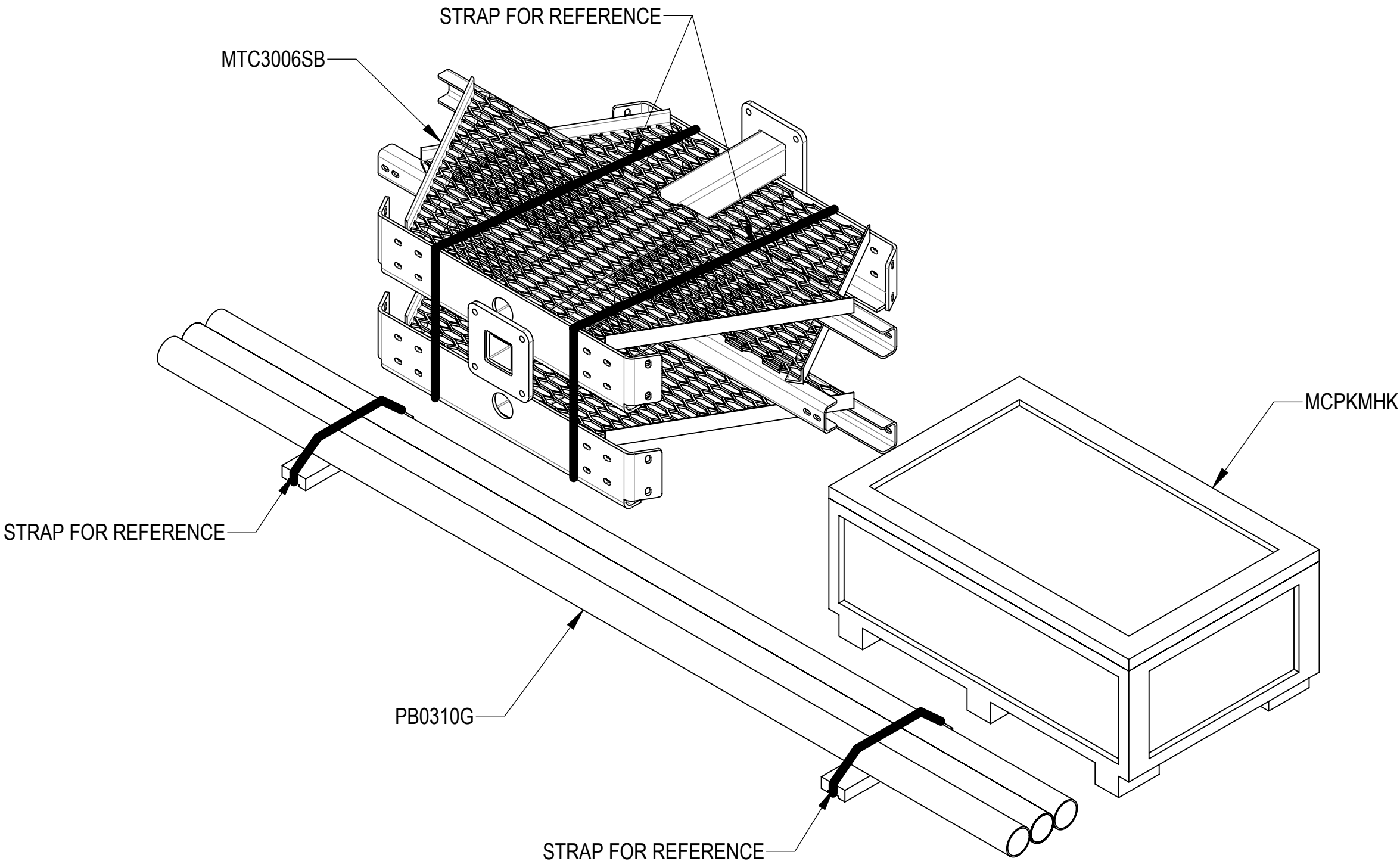


- 1.0 GENERAL NOTES
- 1.1 ALL METRIC DIMENSIONS ARE IN BRACKETS [X. X]
- 1.2 FOR PATENT INFO: <https://www.adwpat.com>
- 2.0 DESIGN NOTES
- 2.1 ANY HAZARDS OR OBSTRUCTIONS TO THE CLIMBING FACILITY AND SAFETY CLIMB MUST BE IDENTIFIED PRIOR TO INSTALLING THE APPURTENANCE. ADDITIONAL PRODUCTS MAY BE REQUIRED TO MAINTAIN THE INTEGRITY OF THE SAFETY CLIMB. DURING INSTALLATION, TEMPORARY AND/OR PERMANENT PRECAUTIONARY MEASURES SHOULD BE TAKEN TO PRESERVE THE CLIMBING FACILITY AND/OR SAFETY CLIMB.
- 2.2 FITS MONOPOLES 12"-50" O.D.
- 3.0 MANUFACTURING/SPECIAL REQUIREMENTS
- 3.1 TIGHTEN ALL BOLTS SECURING FLAT PLATES BY THE TURN-OF-NUT METHOD. TIGHTEN ALL U-BOLTS USING TURN-OF-NUT METHOD WITH ATTENTION TO LEAVE EQUAL DISTANCE AND EQUAL FORCE ON EACH LEG OF THE U-BOLT.
- 4.0 TEST
- 5.0 PACKAGING
- 5.1 PACKAGING SHALL MEET ANDREW REQUIREMENTS PER DOCUMENT IS-PL-3005
- 5.2 PRINTED DOCUMENT TO BE PLACED INSIDE POLYBAG AND THEN IN SHIPPING CONTAINER
- 5.3 EXTRA HARDWARE MAY BE SUPPLIED, BAGGED AND SHIPPED

REVISIONS			
REV.	DESCRIPTION	DATE	APPROVED
A	INITIAL RELEASE	MRC 04/05/18	8000026787
B	UPDATED WELDMENT SNUB NOSE & UPDATED PIPE MOUNT PLATE	MRC 02/13/20	8000039257
C	GB-0522A WAS GB-0520A, GUB-4356 WAS GUB-4355 TO MATCH WITH SAP BOM; GB-0420A WAS GB-0416A	RY1002 27APR25	BA1025 50102553AMO




PART NUMBERS, WEIGHTS, & EPA

PART NUMBER	DESCRIPTION	WEIGHT (LBS)	(EPA)A (FT^2)*	(EPA)A 1/2" ICE THICKNESS (FT^2)*	ANTENNA PIPES	INCLUDED PARTS		
						MTC3006SB	PB0310G	MCPKMHK
MC-PK10-B	10'6 FACE SNUB NOSE PLATFORM	981.24	17.54	21.19	-	1	1	1

* (EPA)A DOES NOT INCLUDE MOUNTING HARDWARE.

DENSITY	MASS	81.24	lbs/in³
VOLUME	8103.86		lbs
SURFACE AREA	46079.71		in³
HEIGHT	150.8"		
LENGTH	11.5"		
WIDTH	130.5"		



TOLERANCES

0 PLACE X[X] ± .25[6.4] 2 PLACE .XX[X] ± 0.06[1.5] 1 PLACE .X[X] ± 0.12[3.0] ANGLES ± 2°

SAP MATERIAL MASTER

MC-PK10-B

FINISH

MATERIAL

UNLESS OTHERWISE SPECIFIED DIMENSIONS ARE IN INCHES INTERPRET PER ANSI Y 14.5M-1994

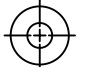
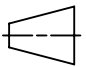
	NAME	DATE	TITLE
CE	MRC	02/13/20	10'6 FACE SNUB NOSE PLATFORM
RW	RY1002	05/12/2025	
AD	YC1015	05/14/2025	
RE	YMENG	05/22/2025	
ECN 50102553AMO			

SCALE

1:12

DOCUMENT NO.

MC-PK10-B

SIZE	Auth Group	INSL	MODEL			DRAWING			SHEET
C			VERSION	STATUS	REVISION	VERSION	STATUS	REVISION	
			03	RE	C	03	RE	C	1 OF 3

D

C

B

A

4

4

3

2

1

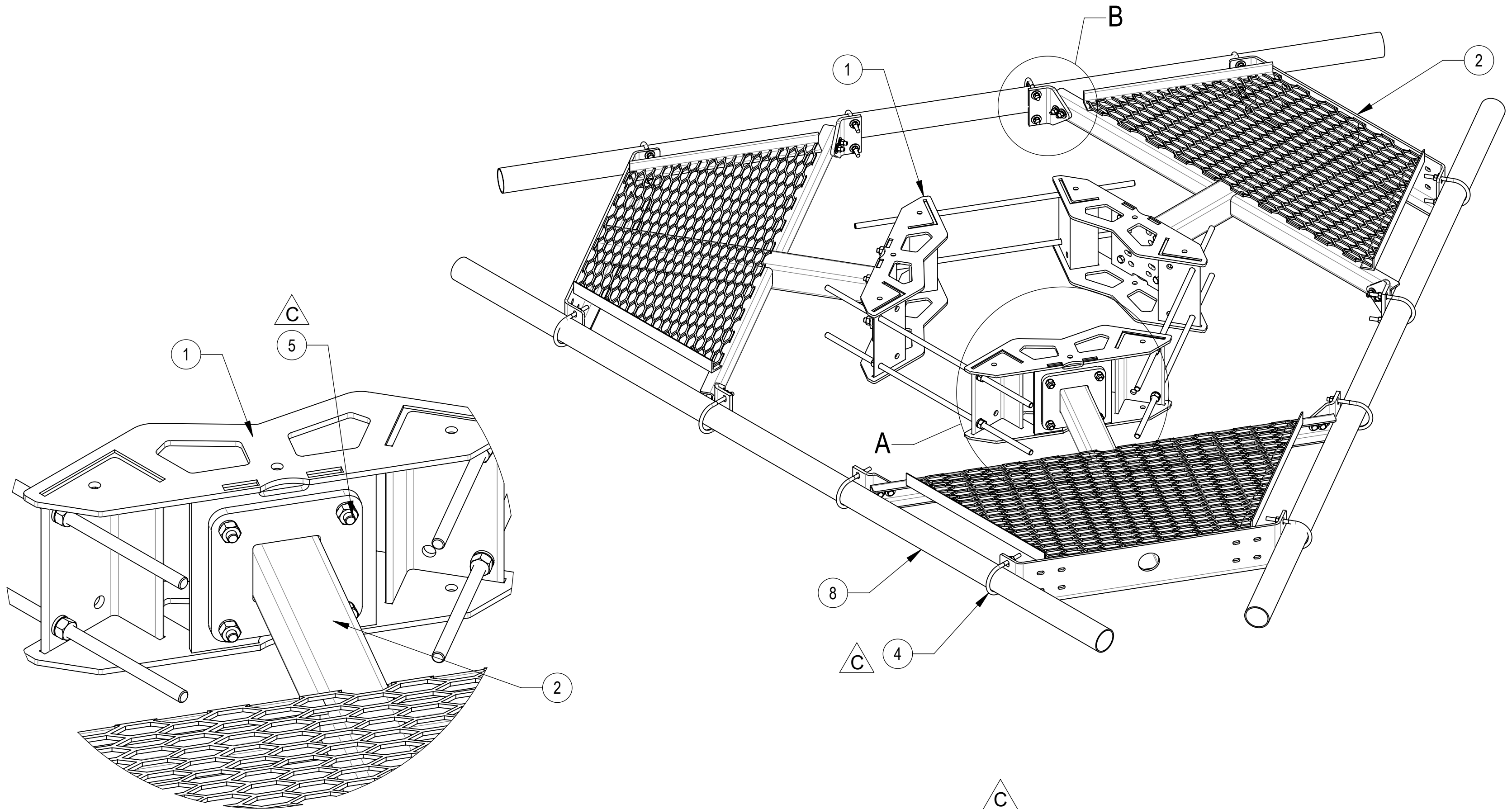
D

C

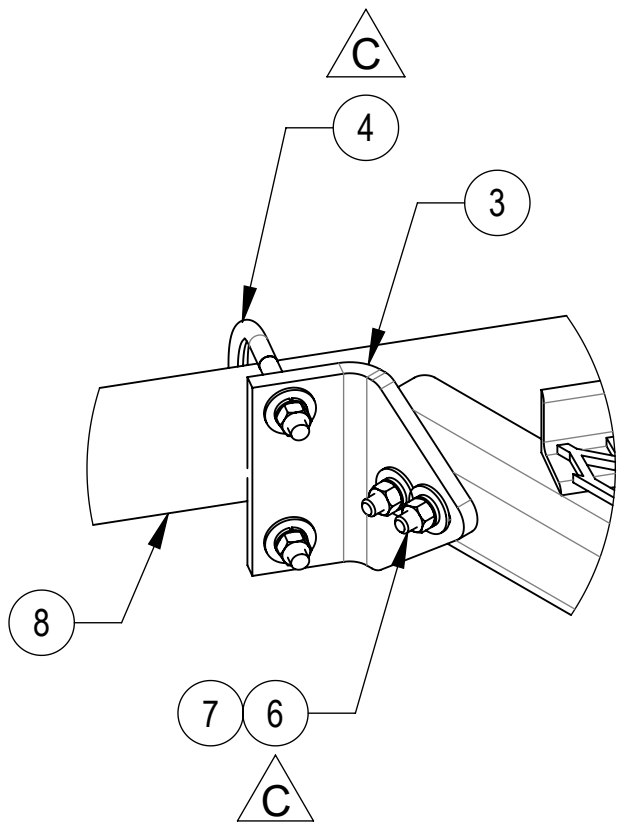
B

A

1



DETAIL A
SCALE 1 : 5



DETAIL B
SCALE 1 : 5

COMPONENT PART NUMBERS PROVIDED FOR ASSEMBLY PURPOSES;
INDIVIDUAL COMPONENTS MAY BE SHIPPED AS PARTS WITHIN AN INCLUDED KIT.

ITEM	PART NO.	DESCRIPTION	QTY.	WEIGHT	NOTE NO.
1	MC-RM1550-3	15" - 50" OD RINGMOUNT	1	229.90 LBS	
2	MTC300602	SECTOR WELDMENT FOR SNUB NOSE PLATFORM	3	172.87 LBS	
3	MTC300618	MOUNTING PLATE FOR MT-196	6	4.38 LBS	
4	GUB-4356	1/2" X 3-5/8" X 6" GALV U-BOLT	12	0.81 LBS	
5	GB-0522A	5/8" X 2-1/4" GALV BOLT KIT (A325)	12	0.28 LBS	
6	GB-0420A	1/2" X 2" GALV BOLT KIT (A325)	12	0.16 LBS	
7	GWF-04	1/2" GALV FLAT WASHER	24	0.04 LBS	
8	MT-547-126	3.5" O.D. X 126" PIPE	3	61.93 LBS	

Confidential



TITLE
10'6" FACE SNUB NOSE PLATFORM

SIZE
C

SCALE
1:12

DOCUMENT NO.
MC-PK10-B



DRAWING			SHEET 2 OF 3
VERSION	STATUS	REVISION	
03	RE	C	

4

3

2

1

D

D

C

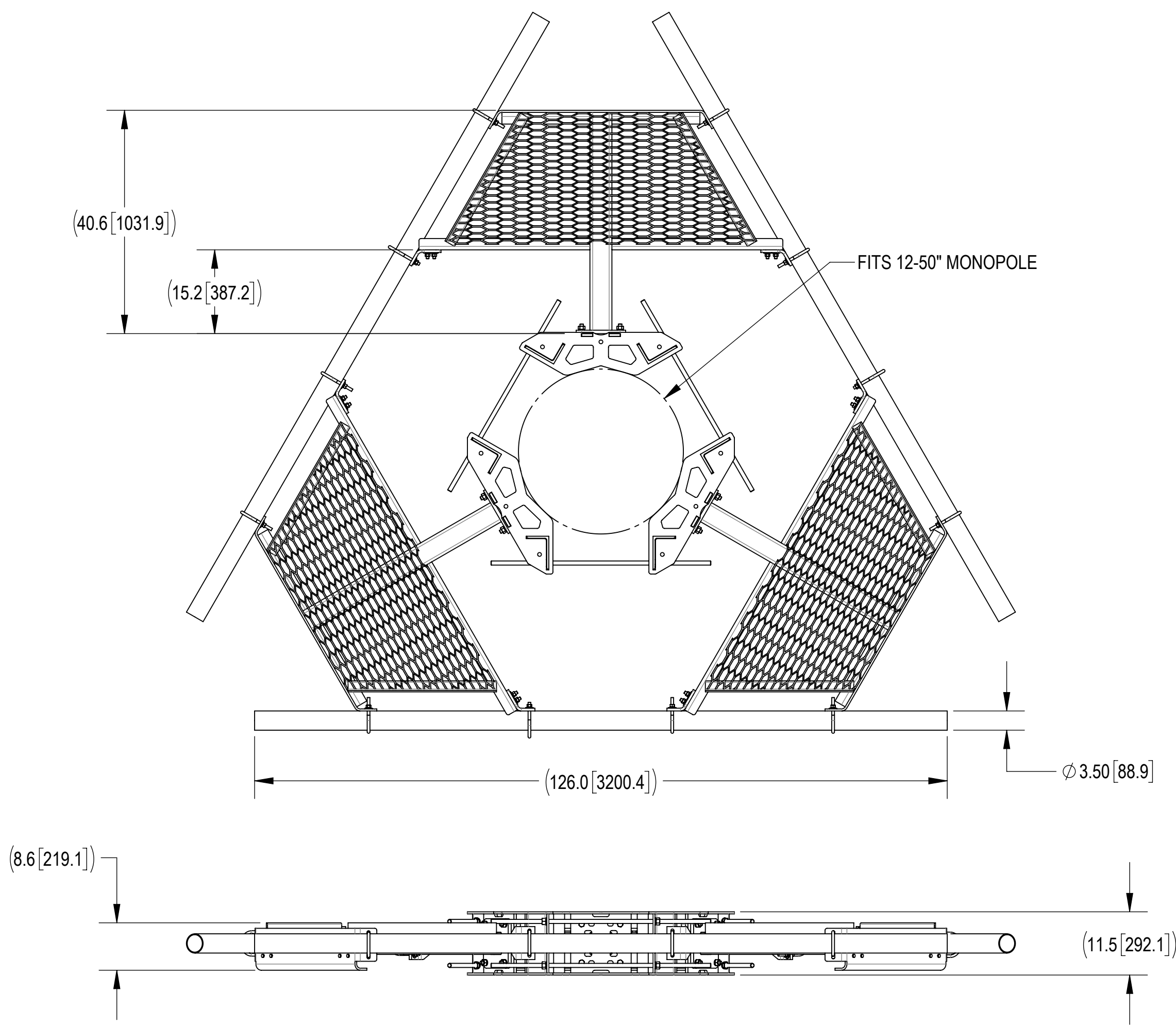
C

B

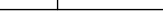
B

A

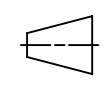
A



TITLE
10'6 FACE SNUB NOSE PLATFORM

SIZE C	SCALE 1:18	DOCUMENT NO. MC-PK10-B			
		DRAWING			SHEET 3 OF 3
		VERSION	STATUS	REVISION	
		03	RE	C	

Confidential



4

3

2

1