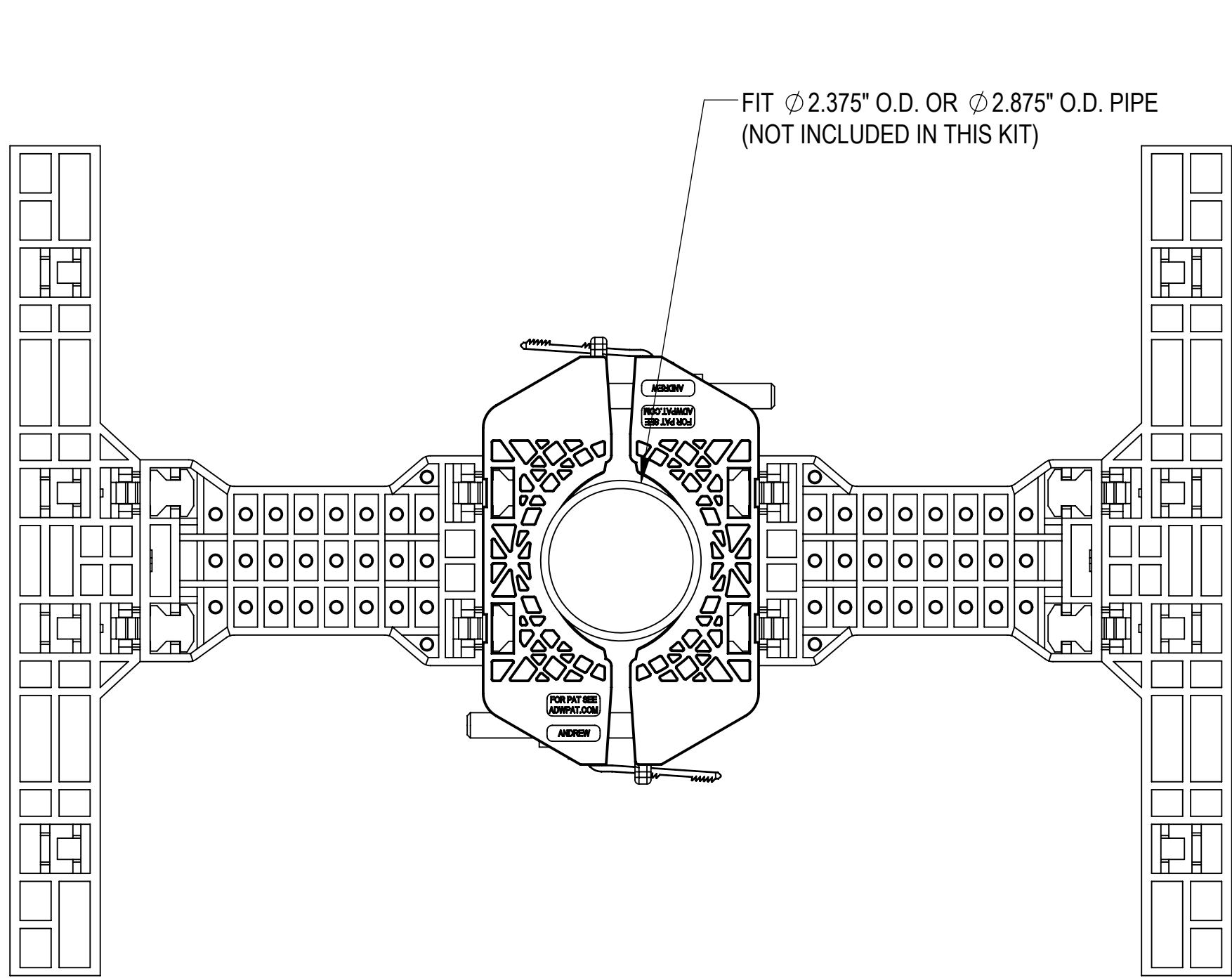
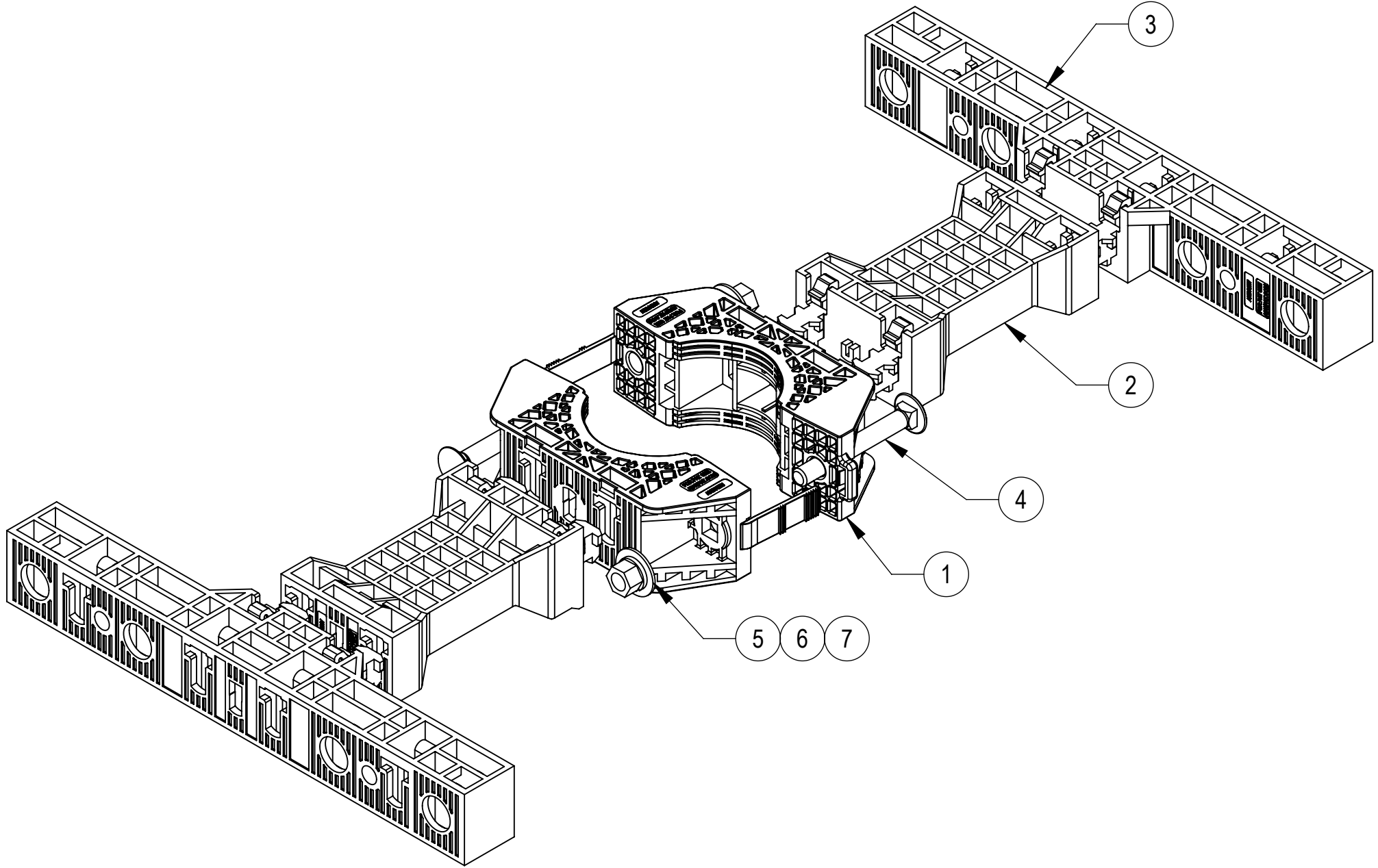


- 1.0 GENERAL NOTES
- 1.1 ALL METRIC DIMENSIONS ARE IN BRACKETS [X.X]
- 1.2 FEATURES CRITICAL TO QUALITY ARE INDICATED IN ROUNDED BOX (XX)
- 2.0 DESIGN NOTES
- 3.0 MANUFACTURING/SPECIAL REQUIREMENTS
- 3.1 TIGHTEN ALL BOLTS SECURING FLAT PLATES BY THE TURN-OF-NUT METHOD.
- 4.0 TEST
- 5.0 PACKAGING
- 5.1 PACKAGING MUST BE AGREED TO IN WRITING BY ANDREW PRIOR TO MASS-PRODUCTION APPROVAL.
- 5.2 PARTS ARE TO BE PACKAGING IN A MANNER TO PREVENT DAMAGE DURING SHIPMENT & STORAGE.
- 5.3 PACKAGING TO ADHERE TO ALL ANDREW, LOCAL & FOREIGN (WHERE APPLICABLE) SHIPPING REQUIREMENTS.
- 5.4 PACKAGING & PARTS TO BE FREE OF ALL CONTAMINANTS INCLUDING PAPER FROM BOX, DIRT, DUST, OILS, MOLD RELEASE, DETERGENT AND ALL OTHER FOREIGN MATERIALS.



ASSEMBLY TOP VIEW







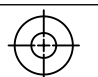
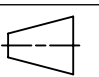
INSTALLATION ASSEMBLY

COMPONENT PART NUMBERS PROVIDED FOR ASSEMBLY PURPOSES;  
INDIVIDUAL COMPONENTS MAY BE SHIPPED AS PARTS WITHIN AN INCLUDED KIT.

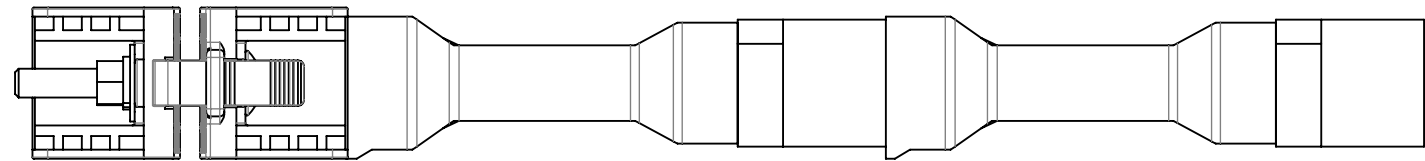
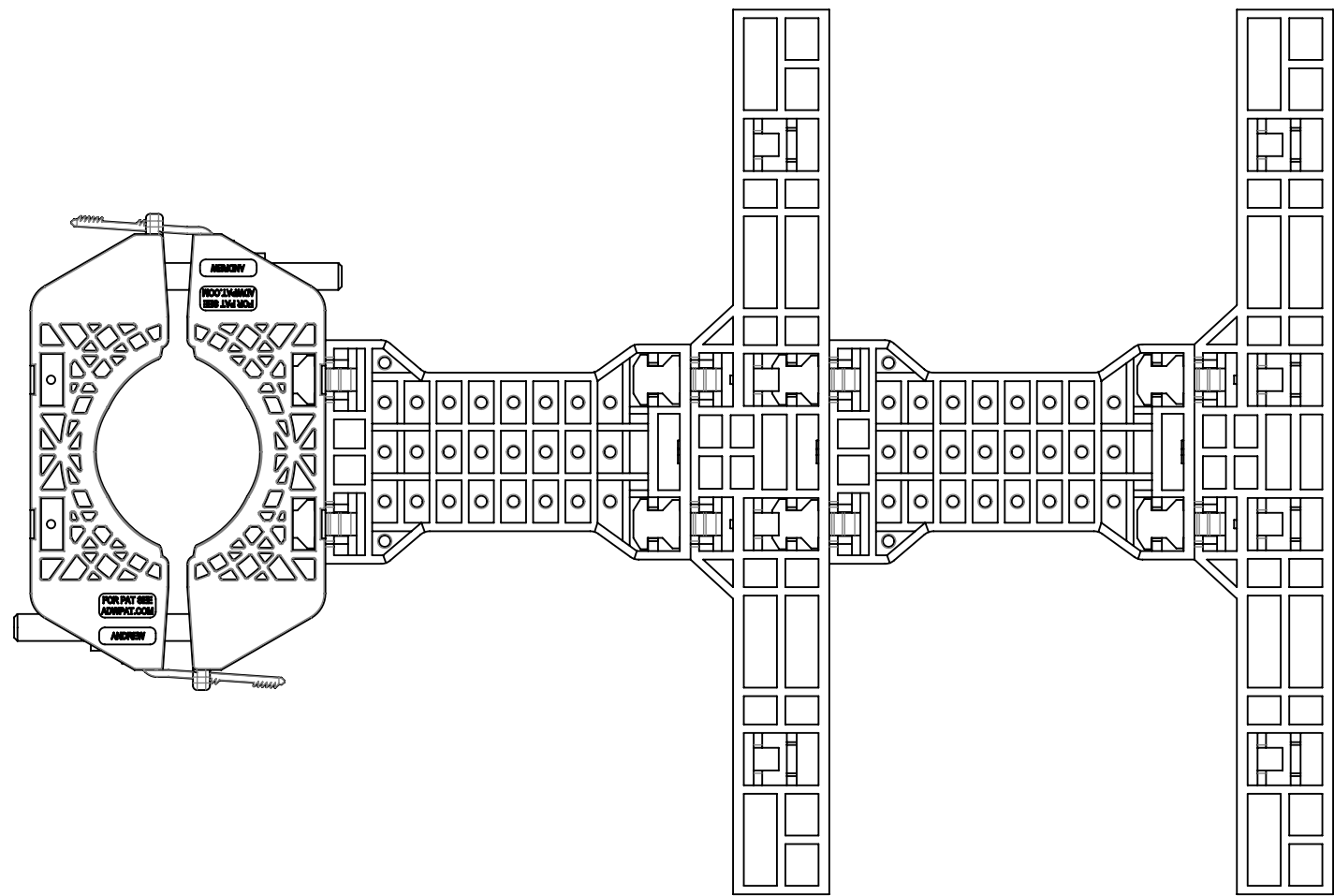
ITEM NO.	PART NUMBER	DESCRIPTION	QTY.	WEIGHT
1	PGCS-1000	CLAMP, FRONT-REAR, POLYMER 4CP	2	0.33 LBS
2	PGCS-8000	ADAPTER, POLYMER, 4P	2	0.30 LBS
3	PGCS-7000	PANEL, POLYMER, 8CP	2	0.47 LBS
4	9615-15	BOLT, CARRIAGE, 3/8-16, 3, STL GALV	2	0.12 LBS
5	GWf-03	3/8" FLAT WASHER	2	0.01 LBS
6	GWL-03	3/8" GALV LOCK WASHER	2	0.01 LBS
7	GN-03	3/8" GALV HEX NUT	2	0.02 LBS

DENSITY		lbs/in³
MASS	2.30	lbs
VOLUME	55.46	in³
SURFACE AREA	949.16	in²
HEIGHT	4.25"	
LENGTH	19.25"	
WIDTH	6.25"	

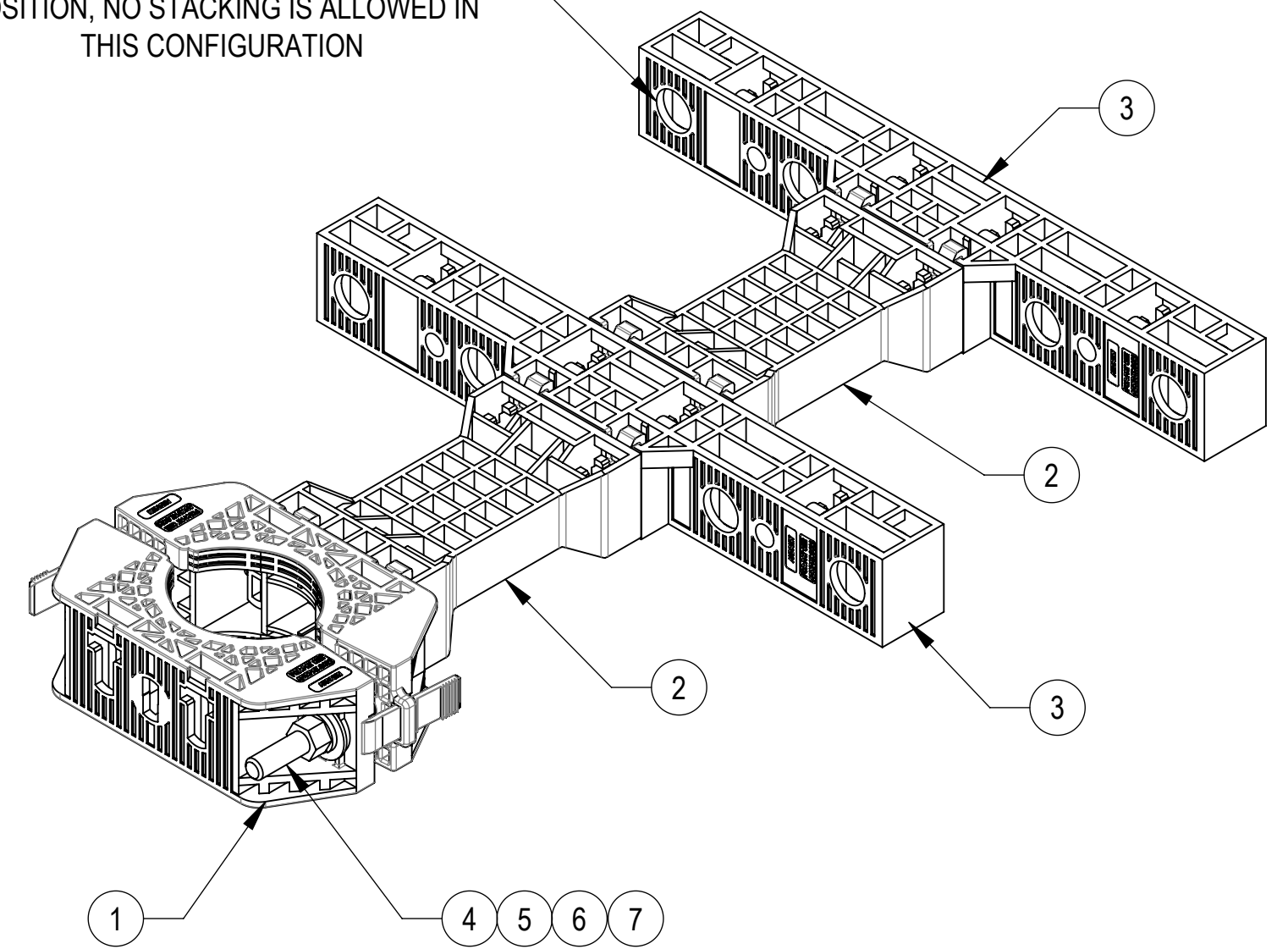
Confidential

<div><b>ANDREW</b><sup>®</sup> an Amphenol company</div>											
TOLERANCES						SAP MATERIAL MASTER					
1 PLACE .X[X] ± 0.2[6.3]			3 PLACE .XXX[X] ± 0.060[1.5]			PGP-CS16					
2 PLACE .XX[X] ± 0.12[3.0]			ANGLES ± 2°								
FINISH					MATERIAL						
UNLESS OTHERWISE SPECIFIED DIMENSIONS ARE IN INCHES INTERPRET PER ANSI Y 14.5M-1994		NAME	DATE	PG PREMIUM,CBL-SUPPORT,16-HOLE							
	CE	JL1183	19DEC22								
	RW	JL1183	06/11/2025								
											
	AD	JX1030	06/11/2025	SCALE 1:5	DOCUMENT NO.  PGP-CS16						
	RE	JL1183	06/11/2025								
	ECN 50103287AMO										
SIZE	Auth Group	INSL	MODEL			DRAWING			SHEET 1 OF 2		
C			VERSION	STATUS	REVISION	VERSION	STATUS	REVISION			
			06	RE	G	07	RE	H			

ALTERNATIVE INSTALLATION



ONLY ONE CABLE HANGER PER POSITION, NO STACKING IS ALLOWED IN THIS CONFIGURATION



TITLE  
PG PREMIUM,CBL-SUPPORT,16-HOLE

SIZE **C** SCALE **1:4** DOCUMENT NO. **PGP-CS16**

DRAWING			SHEET 2 OF 2
VERSION	STATUS	REVISION	
07	RE	H	

Confidential