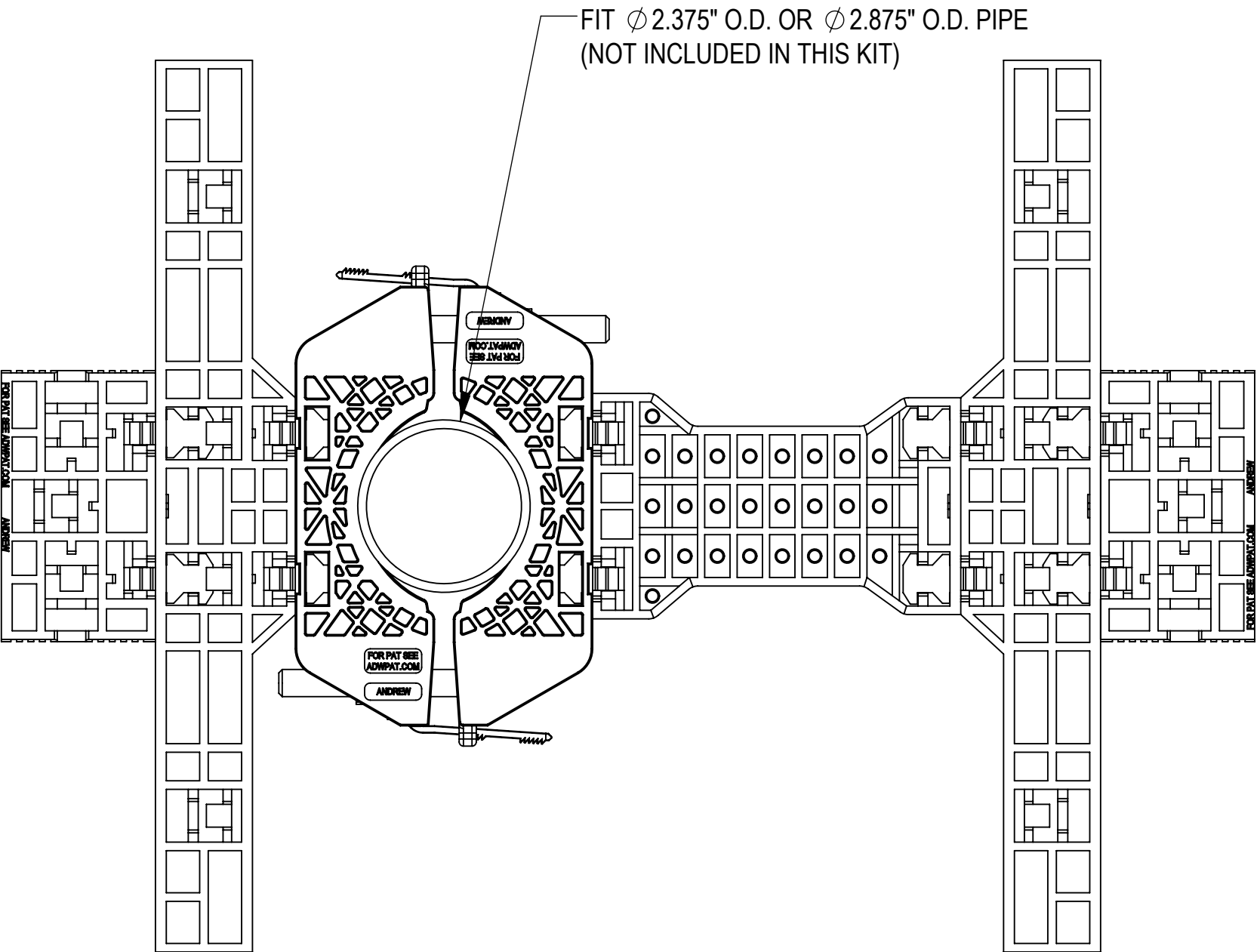
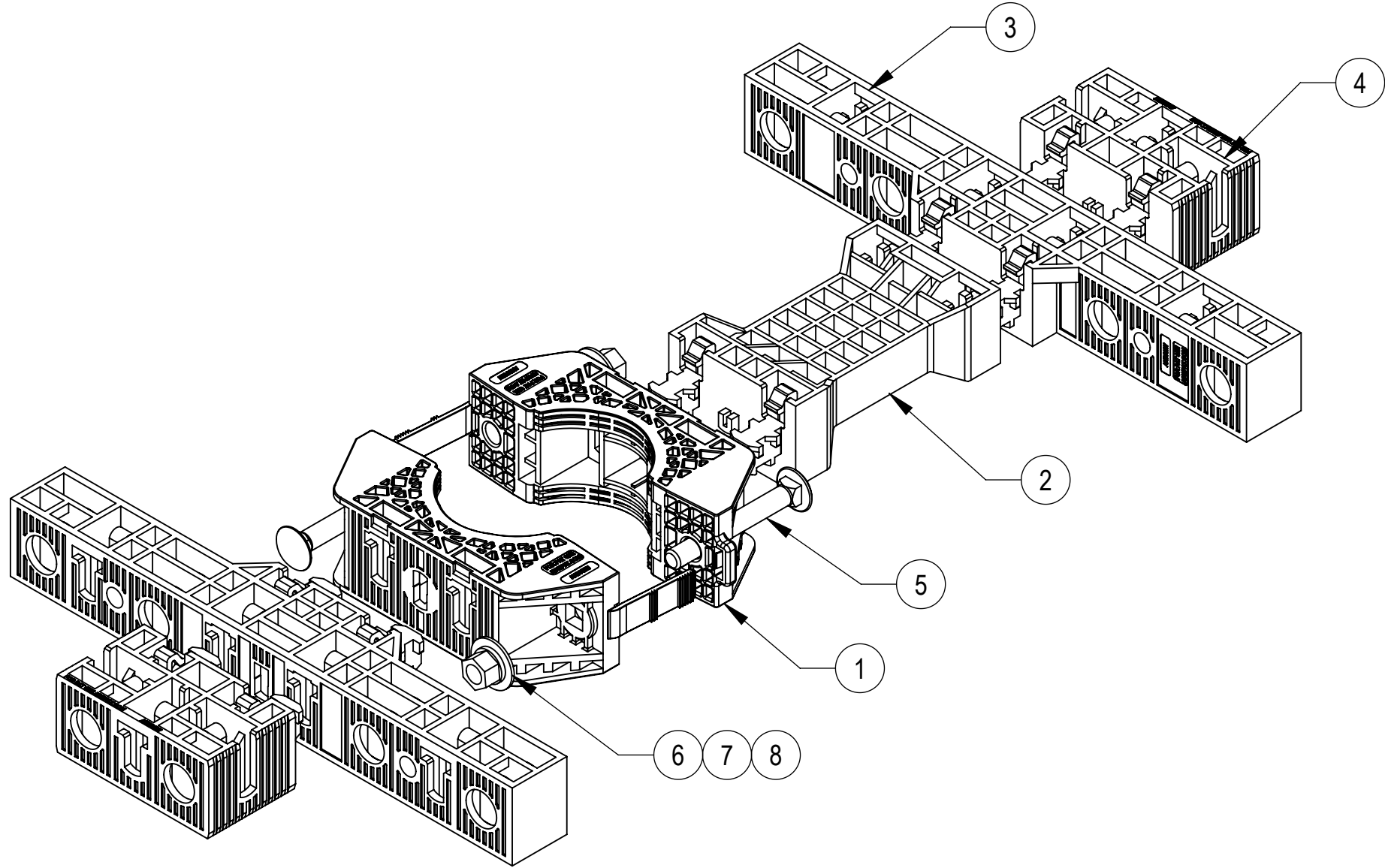


- 1.0 GENERAL NOTES
- 1.1 ALL METRIC DIMENSIONS ARE IN BRACKETS [X.X]
- 1.2 FEATURES CRITICAL TO QUALITY ARE INDICATED IN ROUNDED BOX (XX)
- 2.0 DESIGN NOTES
- 3.0 MANUFACTURING/SPECIAL REQUIREMENTS
- 3.1 TIGHTEN ALL BOLTS SECURING FLAT PLATES BY THE TURN-OF-NUT METHOD.
- 4.0 TEST
- 5.0 PACKAGING
- 5.1 PACKAGING MUST BE AGREED TO IN WRITING BY ANDREW PRIOR TO MASS-PRODUCTION APPROVAL.
- 5.2 PARTS ARE TO BE PACKAGING IN A MANNER TO PREVENT DAMAGE DURING SHIPMENT & STORAGE.
- 5.3 PACKAGING TO ADHERE TO ALL ANDREW, LOCAL & FOREIGN (WHERE APPLICABLE) SHIPPING REQUIREMENTS.
- 5.4 PACKAGING & PARTS TO BE FREE OF ALL CONTAMINANTS INCLUDING PAPER FROM BOX, DIRT, DUST, OILS, MOLD RELEASE, DETERGENT AND ALL OTHER FOREIGN MATERIALS.



ASSEMBLY TOP VIEW



INSTALLATION ASSEMBLY

COMPONENT PART NUMBERS PROVIDED FOR ASSEMBLY PURPOSES;
INDIVIDUAL COMPONENTS MAY BE SHIPPED AS PARTS WITHIN AN INCLUDED KIT.

ITEM NO.	PART NUMBER	DESCRIPTION	QTY.	WEIGHT
1	PGCS-1000	CLAMP,FRONT-REAR, POLYMER 4CP	2	0.33 LBS
2	PGCS-8000	ADAPTER, POLYMER, 4P	1	0.30 LBS
3	PGCS-7000	PANEL, POLYMER, 8CP	2	0.47 LBS
4	PGCS-6000	ADAPTER, POLYMER, 2CP	2	0.21 LBS
5	9615-15	BOLT,CARRIAGE,3/8-16,3,STL GALV	2	0.12 LBS
6	GWF-03	3/8" FLAT WASHER	2	0.01 LBS
7	GWL-03	3/8" GALV LOCK WASHER	2	0.01 LBS
8	GN-03	3/8" GALV HEX NUT	2	0.02 LBS



ANDREW® an Amphenol company

TOLERANCES				SAP MATERIAL MASTER				
1 PLACE .X[X] ± 0.2[6.3]		3 PLACE .XXX[X] ± 0.060[1.5]		PGP-CS18				
2 PLACE .XX[X] ± 0.12[3.0]		ANGLES ± 2°						
FINISH				MATERIAL				
UNLESS OTHERWISE SPECIFIED DIMENSIONS ARE IN INCHES INTERPRET PER ANSI Y 14.5M-1994		NAME	DATE	PG PREMIUM,CBL-SUPPORT,18-HOLE				
	CE	YMENG	07NOV23					
	RW	JL1183	06/11/2025					
	AD	JX1030	06/11/2025	SCALE 1:5		DOCUMENT NO. PGP-CS18		
	RE	JL1183	06/11/2025					
	ECN 50103287AMO							
	SIZE	Auth Group INSL		MODEL		DRAWING		
C			VERSION	STATUS	REVISION	VERSION	STATUS	REVISION
			03	RE	D	04	RE	E

Confidential

DENSITY		lbs/in³
MASS	2.42	lbs
VOLUME	58.49	in³
SURFACE AREA	1000.31	in²
HEIGHT	2.0"	
LENGTH	17.3"	
WIDTH	12.3"	